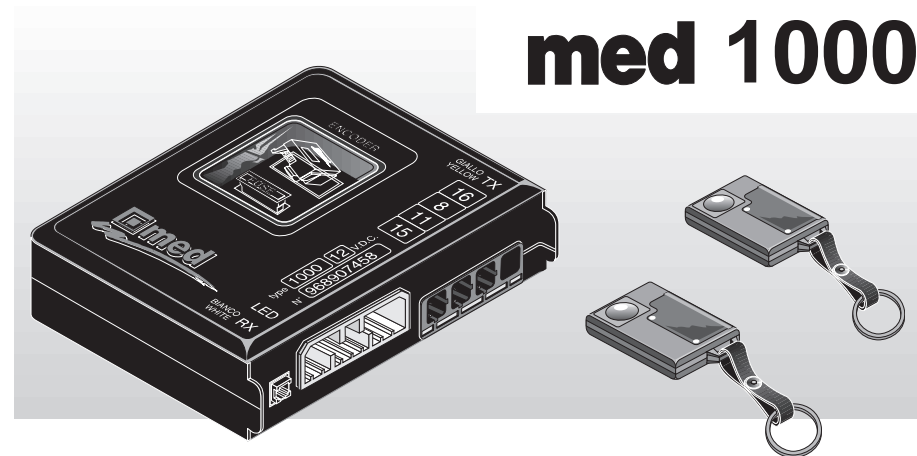




USER INSTRUCTION MANUAL

med 1000



REMOTE CONTROLLED CENTRAL UNIT WITH ALARM, CENTRAL LOCK AND WINDOW WINDING * FUNCTIONS

CAN BE USED WITH ALL IMMOBILIZERS IN THE **med** VEHICLE LINE

* MODULE AZC 130 (OPTIONAL) FOR VEHICLES WITHOUT ORIGINAL COMFORT SYSTEM



med s.p.a.
Via Raffaello, 33
42100 Reggio Emilia (Italia)



Cod. 081.316.251

WARRANTY


CENTRAL UNIT

The technical warranty lasts for 12 months from the date of installation, ex works, and covers parts judged by **med**, at its final decision, to be defective. Outside labour and any other costs are excluded from this warranty coverage. Warranty, covering exclusively those systems for which an installation registration card has been received, is automatically null and void if the damage was due to incorrect installation, tampering or liquid infiltration.

REMOTE CONTROLS

The technical warranty lasts for 36 months from the fabrication date, ex works and covers parts judged by **med**, at its final decision, to be defective. The warranty is null and void if the external casing is broken or if an attempt has been made to open the unit.

CONGRATULATIONS !!!

 **med**, a leading company in the field of vehicle security, offers you high level protection for your vehicle along with the quality, reliability and service that have always distinguished our products.

Addition of a specifically designed **med** immobilizer (the currently available models allow personalised installation in the majority of the vehicles on the road at this time), or with the immobilizer installed in the vehicle as standard supply, will allow you to achieve the maximum level of security in your vehicle.

ATTENTION

The **med 1000** Central Unit is supplied with two remote controls operating at European frequency plus a PIN - CARD (similar to a credit card) with your personal code. This allows you to make an emergency manoeuvre if the remote controls are lost.

For security reasons, your PIN - CARD must be given to you in its sealed packet (page 4) with the code covering label intact.

NEVER LEAVE YOUR PIN - CARD IN THE VEHICLE. KEEP IT IN A SAFE PLACE. DO NOT SHOW ANYONE YOUR PERSONAL CODE.

MAIN FEATURES:

- Central Unit with remote controls, personalised code (ROLLING-CODE the code varies with each transmission) and ANTI-SCANNER protection. All attempts to disarm the system by copying the code or by transmitting all possible combinations in sequence will have no effect.
- Supplied with sealed PIN - CARD featuring PERSONAL CODE to disarm the system in an emergency.
- Alarm function through the vehicle horn if attempts are made to start the engine or open the doors, bonnet or boot.
- Simple and quick to program if the window winding function is to be by-passed.
- Can be programmed by the INSTALLER for automatic activation of the IMMOBILIZER and window winding* function.
- Preset to pilot all **med** immobilizers in the vehicle line.
- Multifunctional indicator LED.
- Extremely limited power draw to safeguard the vehicle battery to the utmost.

* MODULE AZC 130 (OPTIONAL) FOR VEHICLES WITHOUT ORIGINAL COMFORT SYSTEM.

TECHNICAL SPECIFICATIONS:

CENTRAL UNIT

Power source voltage rating	:	12 V	
Power draw	:	inoperative 6 mA	- operative 7 mA
Temperature range	:	from - 40° C to + 85° C	
Positioning	:	in passenger compartment	

TRANSMITTERS

Temperature range	:	from - 20° C to + 85° C	
Battery life	:	(approx. 5 years)	

REMOTE CONTROLS

The **med 1000** can handle up to 8 remote control units at the same time. Two are standard supply with the unit and the other six can be ordered through the installer.



Follow the same confidentiality procedures described previously.

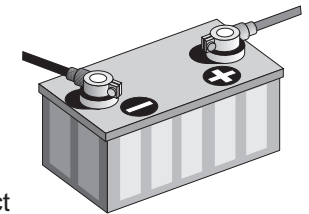
Each transmitter has its own special coding with ROLLING-CODE (the code transmitted changes each time) and ANTI-SCANNER protection to make it impossible to disarm the system by sending a sequence of codes or by copying those sent previously.

DISCHARGED BATTERY

If vehicle battery is discharged because the headlights or other equipment has been left on, the immobilizer will remain armed (providing it was armed before) but the alarm system and the remote controls may be disarmed.

To start the engine, first charge the battery or connect a second one as indicated in the use and maintenance instructions of the vehicle.

Disarm the system by means of the remote control or the emergency procedure after which the engine can be started.



ALARM FUNCTION

The med 1000 Central Unit, if armed with the remote control unit, can signal **ALARM** situations with the vehicle's HORN, LEDs and DIRECTION INDICATORS if.

- Doors, bonnet or boot are OPENED (if connected up) with a single 25 sec. intermittent cycle which can be disarmed with the remote control or the emergency procedure.

NOTE: The alarm cycle is NOT repeated if the door stays open. The alarm cycles is repeated only if the door is closed and then reopened after the end of the current alarm cycle.

- The IGNITION KEY is on ON for at least 2 seconds with a single intermittent cycle lasting a maximum of 25 seconds. Disarm by turning the ignition key to OFF.

NOTE: the alarm cycle is NOT repeated if the ignition key stays on ON. The alarm cycle is REPEATED only of the ignition key is turned to OFF and then back to ON.

WARNING: If an alarm become active while another alarm cycle is current , the latter cycle will be ignored.

If the IMMOBILIZER is automatically armed (page 7), there will be no any alarm cycles but, if the ignition key is turned to ON, the immobilizer will be operative and the flashing light and horn signals will activate.

CONTENTS

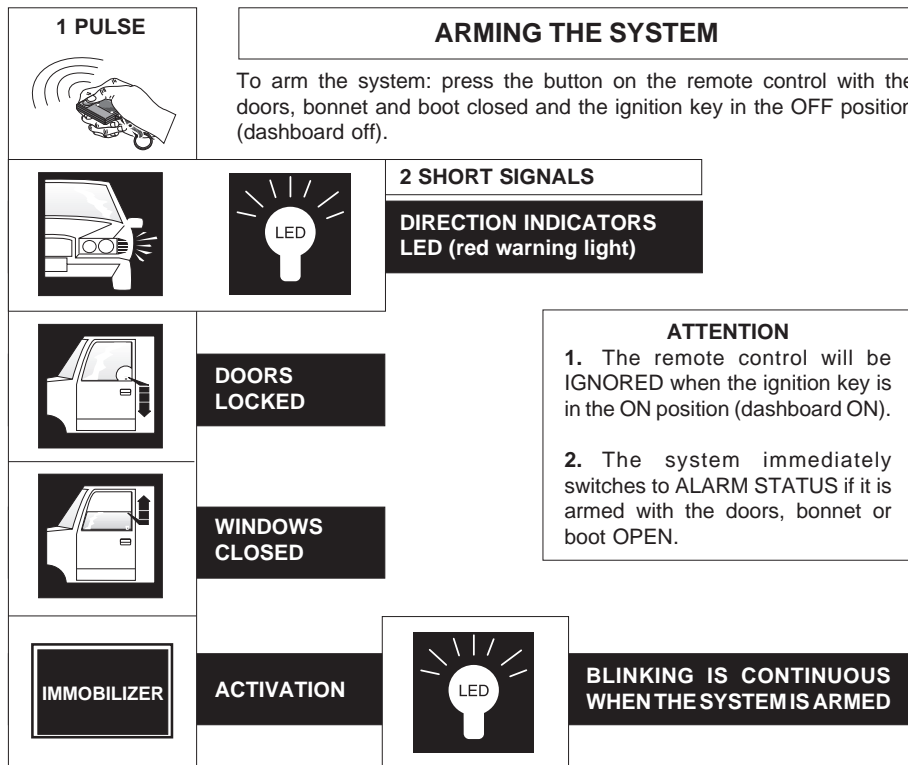


Page	contents
2	Arming the system
3	Disarming the system
4 / 5	Emergency disarming
6	Inhibiting the window winding function
7	Automatic immobilizer activation
8	Alarm functions
9	Remote controls
10	Disarming with the battery low
	Warranty

med s.p.a. reserves the right to make any variations or technical modifications to the product at any moment.

NOTE:

The following instructions refer to the completely installed and connected system. Operation will be reduced if some of the parts have NOT been connected.



AUTOMATIC IMMOBILIZER ACTIVATION

This optional is recommended if you are worried about forgetting to arm the system. It can be activated by the installer using the appropriate programming.

Once the set time has elapsed (20 seconds or 10 minutes) after the ignition key has been turned to OFF or from when the system was disarmed without having armed it again with the remote control unit, the immobilizer will automatically be armed and prevent the vehicle from being started.

In this status, if you turn the ignition key to ON and try to start the vehicle, THE ENGINE WILL NOT START and both the DIRECTION INDICATORS and the LEDs will stay lit until the ignition key has been turned back to OFF.

If the key is turned to ON for at least 2 seconds without having disarmed the system, the horn will also sound until the key is turned back to OFF.

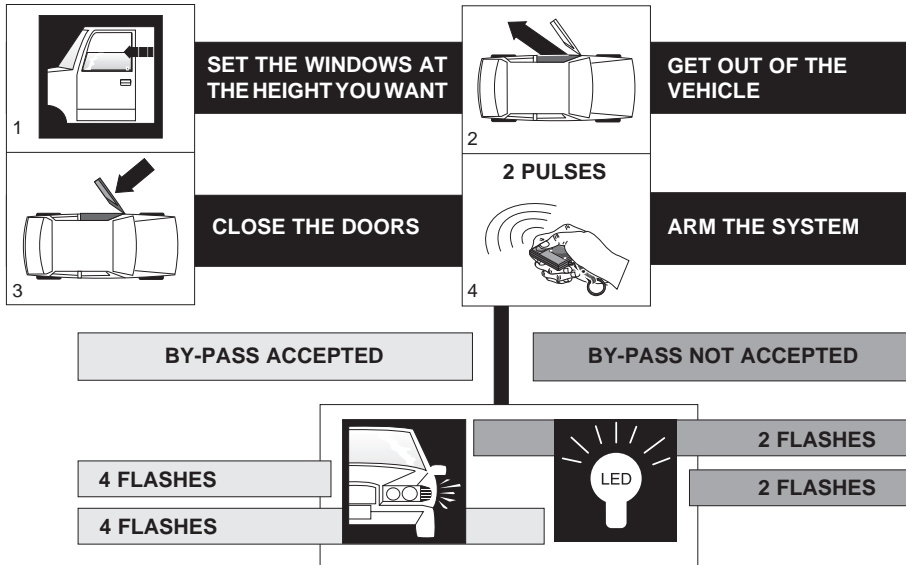
To start the engine, disarm the system using the remote control unit with the ignition key in the OFF position or use the emergency procedure (page 4).

ATTENTION:
The automatic immobilizer arming function will re-activate once the selected time has elapsed again without the vehicle having been started.

When the emergency disarming procedure is used (page 4), automatic immobilizer arming will in any case activate after 10 minutes regardless of the previously set function, until the remote control is used in the habitual way once more.

BY-PASS WINDOW WINDING

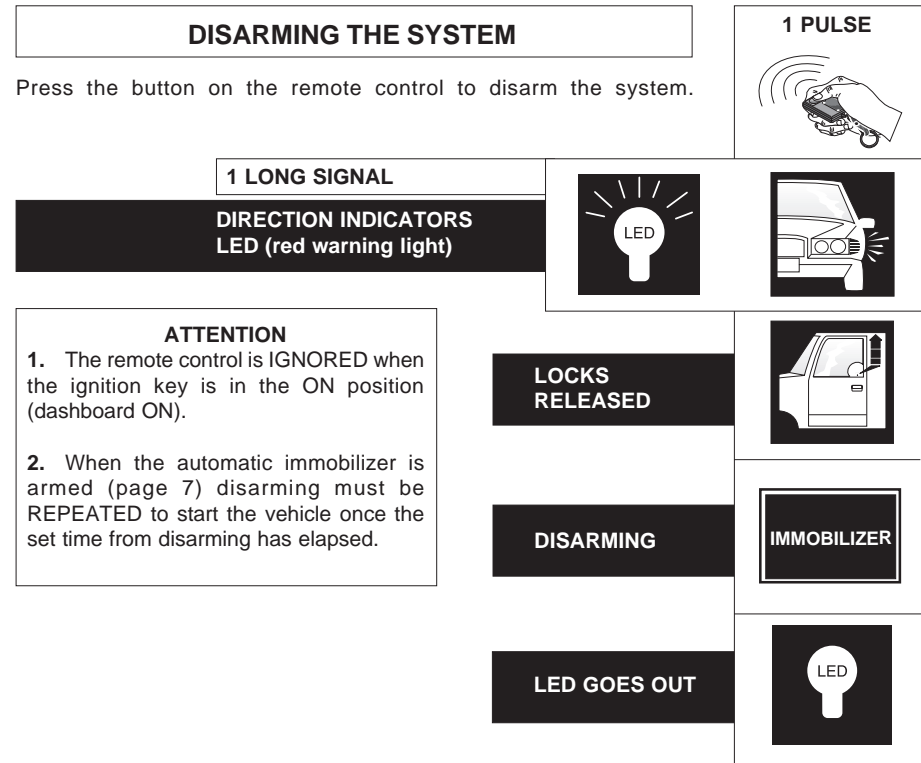
To be used if you want to leave the vehicle windows open.



NOTE: press the remote control unit the second time before the second turn signal flash (within 2 seconds after the first pulse).

DISARMING THE SYSTEM

Press the button on the remote control to disarm the system.



ATTENTION

1. The remote control is **IGNORED** when the ignition key is in the **ON** position (dashboard **ON**).
2. When the automatic immobilizer is armed (page 7) disarming must be **REPEATED** to start the vehicle once the set time from disarming has elapsed.

EMERGENCY DISARMING

In the ABSENCE of the remote control, the system can still be DISARMED and the engine started by using the IGNITION KEY to form a specific **ON - OFF** SEQUENCE as indicated by the PERSONAL CODE in the **PIN - CARD** under the sticker with the serial number.

The required operations, also given on the back of the **PIN - CARD**, are the following:

1. DETACH THE LABEL FROM THE PIN - CARD: YOU WILL SEE THE 6-FIGURE PERSONAL CODE UNDERNEATH.
2. WAIT UNTIL ANY ACOUSTIC ALARM SIGNALS HAVE TERMINATED.
3. INSERT THE IGNITION KEY INTO THE PANEL IN THE **OFF** POSITION.
4. TURN IT: ON (DASHBOARD ON) AND OFF WITHOUT ACTIVATING THE STARTER MOTOR, FOR THE NUMBER OF TIMES INDICATED BY THE 1st. FIGURE IN YOUR PERSONAL CODE (e.g: number 3 means turn the key ON-OFF, ON-OFF, ON OFF three times in quick succession).
5. WAIT UNTIL THE LED (red warning light) BLINKS SHORTLY BY WAY OF CONFIRMATION.
6. REPEAT OPERATIONS 4 - 5 FOR THE REMAINING 5 FIGURES.
7. AT THE END OF THIS OPERATION, A LONG BLINK FROM THE LED AND DIRECTION INDICATORS WILL INDICATE THAT THE SYSTEM IS DISARMED. YOU HAVE 10 MINUTES WITHIN WHICH TO START THE ENGINE.

4

8. **IF THE ENGINE STOPS, THE SYSTEM WILL REMAIN DISARMED FOR 10 MINUTES.** REPEAT THE SEQUENCE FROM POINT 2 IF THE ENGINE REMAINS AT A STANDSTILL FOR A LONGER PERIOD.
- **IF THE OPERATION IS INCORRECT** (SERIES OF SHORT BLINKS) REPEAT IT FROM POINT 3 AS SOON AS THE SLOW BLINKS RETURN.
 - **IF THE OPERATION IS INTERRUPTED**, REPEAT THE SEQUENCE FROM POINT 3 AS SOON AS THE SLOW BLINKS RETURN.

NOTE: there is no limit to the number of times the described procedure can be repeated. The PERSONAL CODE is also used to AUTOMATICALLY select AUTOMATIC ARMING of the IMMOBILIZER after 10 minutes (page 7). When the remote control is used again, AUTOMATIC IMMOBILIZER ARMING returns to the original program.

ATTENTION

NEVER LEAVE YOUR PIN-CARD IN THE VEHICLE

KEEP IT IN A SAFE PLACE

DO NOT SHOW YOUR 6-FIGURE PERSONAL CODE TO ANYONE

5