

TECHNICAL FEATURES SIR 020

Power supply	:	12 V	(nominal value)
Power consumption	:	4 mA	(with engine turned off)
Temperature range	:	from - 20° C to + 85° C	
Cable lenght	:	2,5 mt.	
Protection	:	IP 54	(IEC 529 1989 - DIN 40050)

TEST RUN

Check that with the system in alarm mode the siren rings regularly.

METHOD OF USE

Follow the attached instructions for the alarm exchange.

WORKING ORDER

The siren is fitted with a high powered quarts sound emitter and with low energy consumption. The power is supplied directly from the vehicle's battery via the **ORANGE [+30]** and **YELLOW** (connection) wires.

The siren will CONTINUOUSLY sound for all the alarm cycle if it received a positive command from the **BLUE** wire or a negative one from the **BLACK** wire.

The guiding signal may also be INTERMITTENT because the frequency is less than 1 second, but the sound is CONTINUOUS. The siren will stop the sound after 1 second of interruption.

The **SIR 020** may be used as stand alone or combined to a main siren auto-powered supplied and armoured. It is possible to have more than one **SIR 020** sirens placed on various parts of the vehicle; these are to be connected together in parallel.

MAINTENANCE

No specific maintenance is required.

CAUTION!! when cleaning the engine it is important to adequately protect the siren.

GUARANTEE

The TECHNICAL GUARANTEE is for one year from the date of installation with ex-works terms for those defective parts, but subject to the incontestable decision of **med**.

Under this form of cover the guarantee DOES NOT INCLUDE costs for labour and any other type of obligation.

The guarantee is only applicable for equipment for which we have received the appropriate INSTALLATION CARD properly filled in. For the **SIR 020**, use the **med** CENTRAL GUARANTEE CARD supplied with a bar code label with the serial number.

IMPORTANT!!

med s.p.a. is NOT RESPONSIBLE and the GUARANTEE is void in the event of inappropriate use of the equipment or parts thereof tampering with or connected to unsuitable equipment.



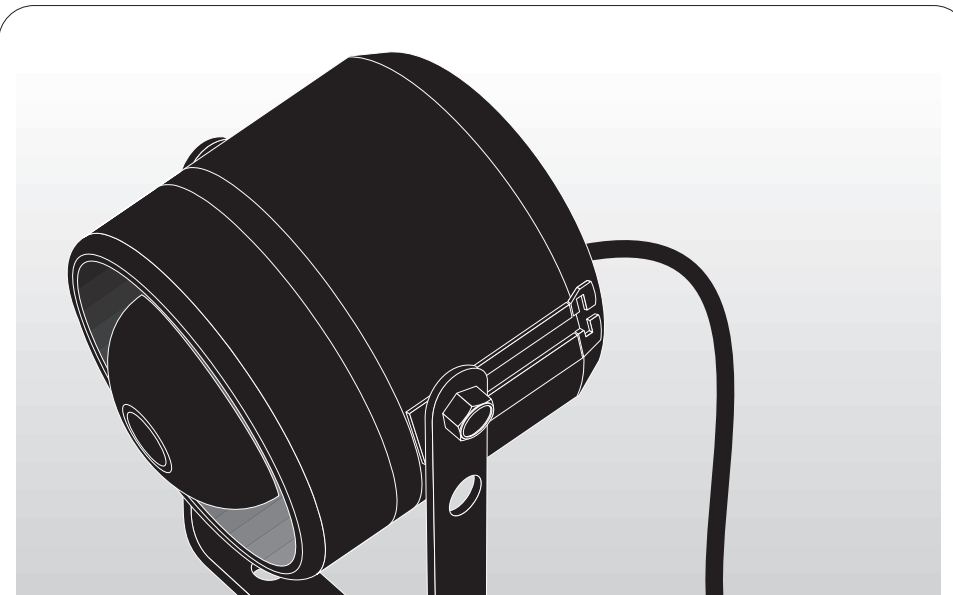
med s.p.a.
Via Raffaello, 33
42100 Reggio Emilia (Italy)



Cod. 081.316.261 01/88



081316261



Siren

SIR 020

UNIVERSAL ELECTRONIC SIREN - 12 V

List of parts in the pack:

- **SIR 020** siren
- Assembly instructions
- Assembly accessories bag **SAC 020**

assembly instructions

ELECTRONIC SIRENS WITH UNIVERSAL APPLICATION

Legend

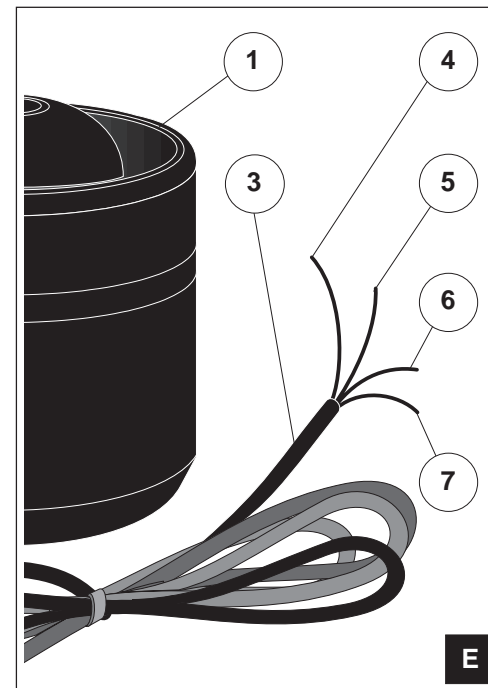
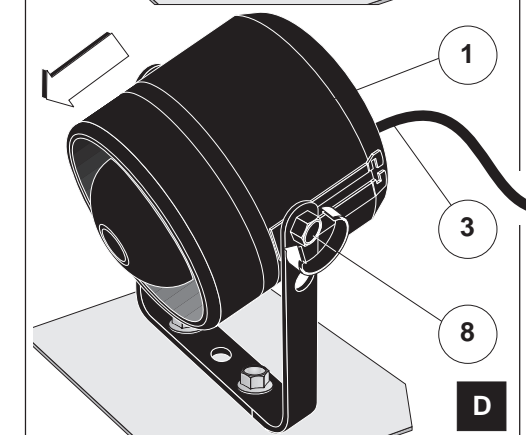
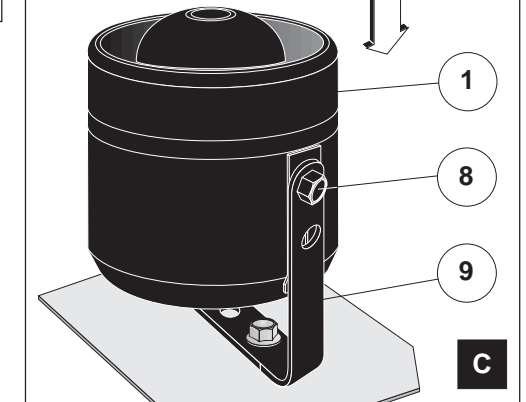
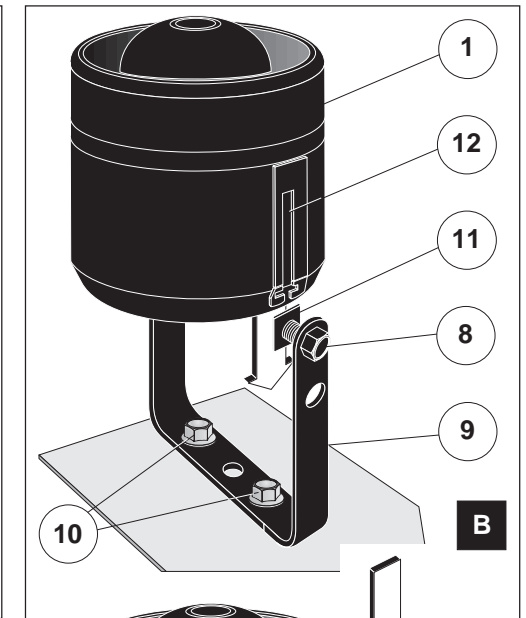
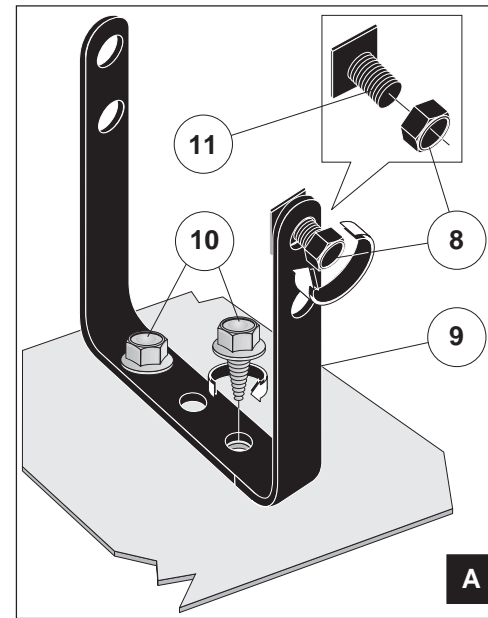
- | | |
|---|-----------------------------|
| 1. SIR 020 siren | 7. ORANGE wire [+30] |
| 2. Command med exchange | 8. Self-locking fixing nut |
| 3. SIR 020 connection cable | 9. Support bracket |
| 4. BLACK wire (negative command) | 10. Self tapping screw |
| 5. BLUE wire (positive command) | 11. Special screws |
| 6. YELLOW wire (connection) | 12. Siren fitting slot |

ASSEMBLY INSTRUCTIONS

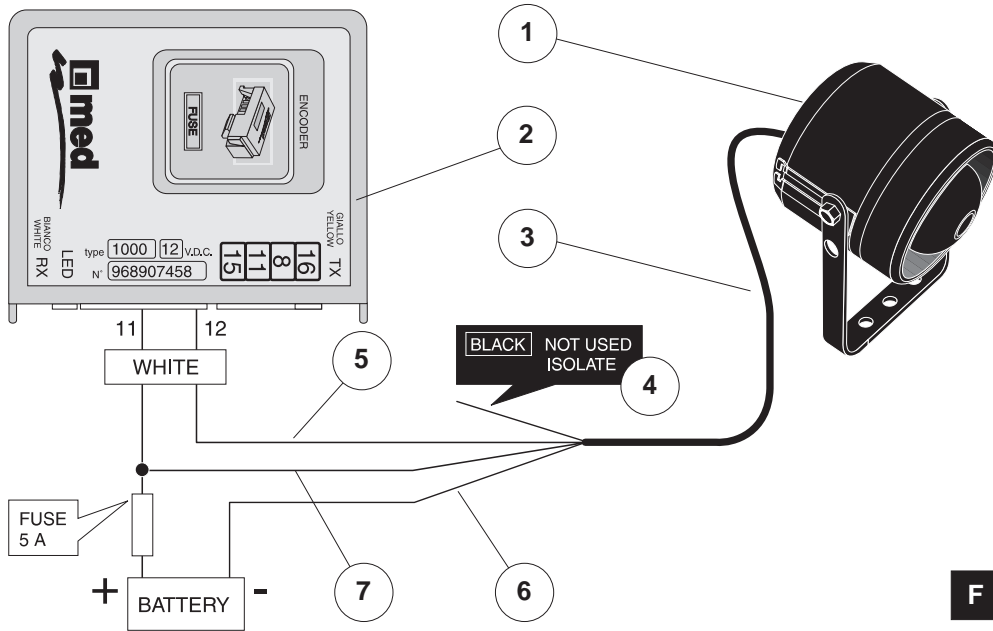
1. Locate the ideal place to connect the sirens making sure that the sound has access to the externality of the vehicle. The loudability of the sound should not be reduced by such things as sound absorbing material, protective plastics etc... .

CAUTION: Avoid mounting the siren near heat intensive areas (discharge manifold, turbo compartment etc...), areas protected from constant liquid sprays, but with the horn pointing downwards: figure D.

2. Fix the support bracket 9 to the body of the vehicle by means of the supplied self tapping screws 10: figure A.
3. Insert the two special screws 11 and the relative nuts 8 in the support bracket 9 WITHOUT fastening it.
4. Insert the siren 1 in the fixing slot 12 on the special screws 11: figures B - C.
5. Position the siren horn downwards in order to prevent any accumulation of liquids in the horn which may damage it: figure D.
6. Lock the siren in position by TIGHTENING the fixing nuts 8.
7. Lay and fix cable 3 in the best position to connect to the command exchange 2. Avoid hot parts and parts which can damage the cable itself or the connector.
8. Connect the **ORANGE 7** wire to a permanent position [+30] placing a 5A fuse in on it and the **YELLOW 6** wire to a connection on the negative terminal of the battery or a point made specifically available by the manufacturer of the vehicle.
9. Connect the command: **BLACK** for negative signals or **BLUE** for positive signals by following the diagram in figures F - G - H - I.
The wire that is NOT employed should be isolated.

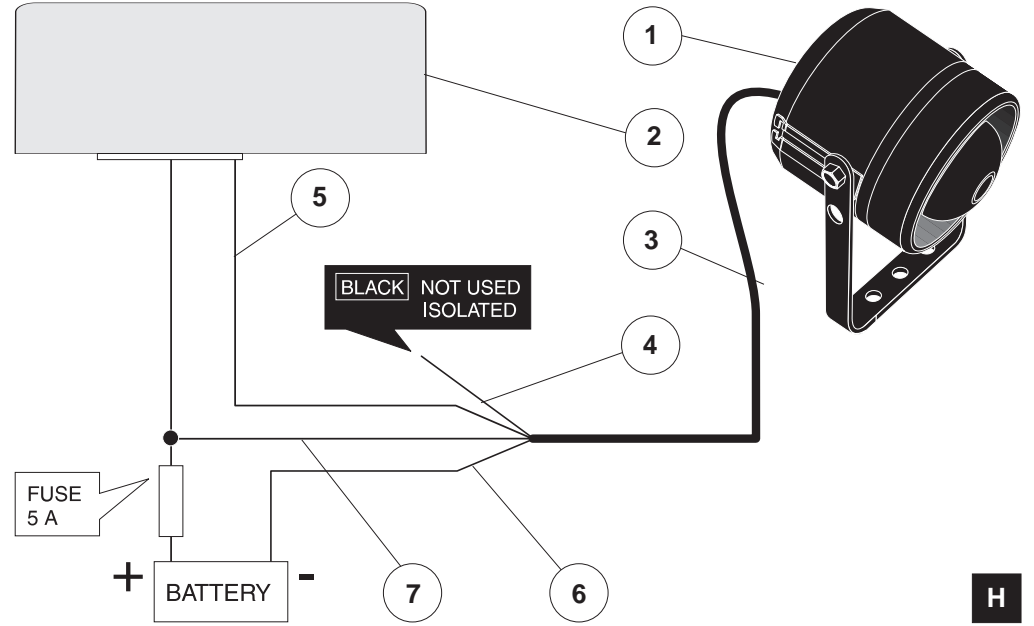


CONNECTION DIAGRAM OF THE med 1000 POSITIVE COMMAND



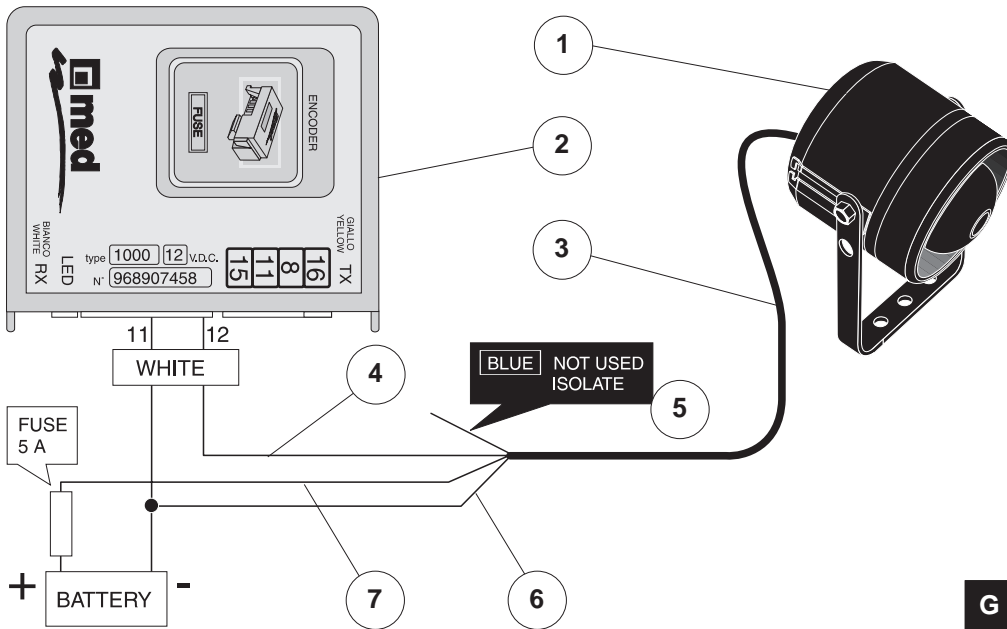
F

UNIVERSAL CONNECTION DIAGRAM WITH POSITIVE COMMAND



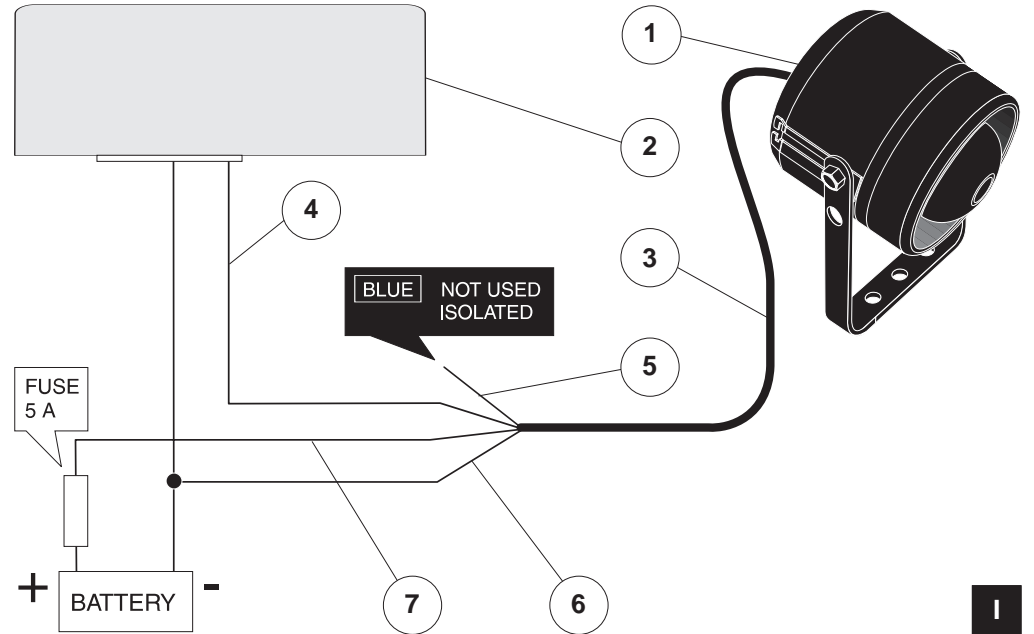
H

CONNECTION DIAGRAM OF THE med 1000 NEGATIVE COMMAND



G

UNIVERSAL CONNECTION DIAGRAM WITH NEGATIVE COMMAND



I