

TECHNICAL FEATURES

Nominal voltage:	12 V (nominal value)
Absorption: Stand-by:	None (in absence of consent from ignition key)
With engine running:	4 mA (with engine running)
Temperature range:	from -30°C to + 80°C
Encoder:	For connection to alarm systems
Cable length:	1,5 m

STATUS MEMORY

The **DUP 011** has a feature which we call "**STATUS MEMORY**". This function "remembers" and preserves the condition (**status**) of the engine being on.

Consequently the electronic key can be removed without causing the engine to stop. If the engine is switched off afterward using the ignition key, the "**STATUS MEMORY**" makes it possible to restart the engine within **3-4 seconds**, even without the electronic key.

IMPORTANT NOTE: This **control duplicator** is equipped with **three electronic keys** plus **Encoder**, which makes it possible to connect it to an alarm system activated by remote control. For security reasons, we do not supply further keys. Worn out keys may, however, be turned, in for replacement.

GUARANTEE

The technical guarantee is for one year from the date of installation for parts recognised as defective by **med**. Unauthorised manual labour and any other expenses are excluded from this coverage.

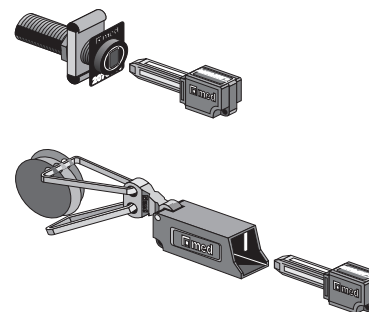
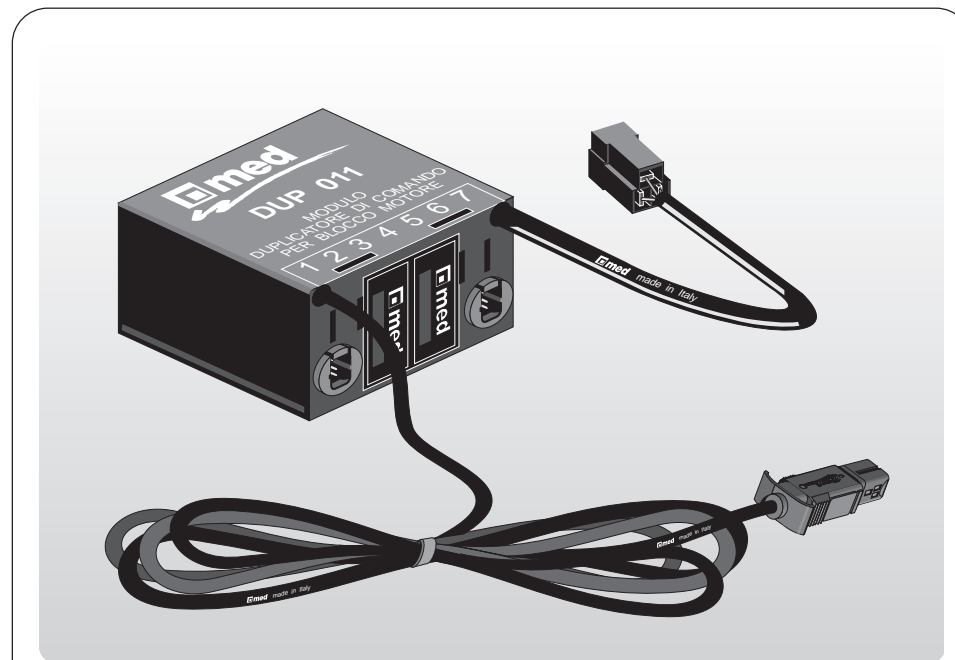
The guarantee is valid only for those products for which the installation form has been completed and sent to med.



med spa
P.O Box 255
42100 Reggio Emilia (Italy)



Cod. 581.316.203



DUP 011

Control duplicator for two **med** immobilisers controlled by electronic key and equipped with Encoder

Item included in the packaging:

- DUP 011** module
- Fitting instructions
- Packet with two keys
- Packet with spare key and Encoder

fitting instructions

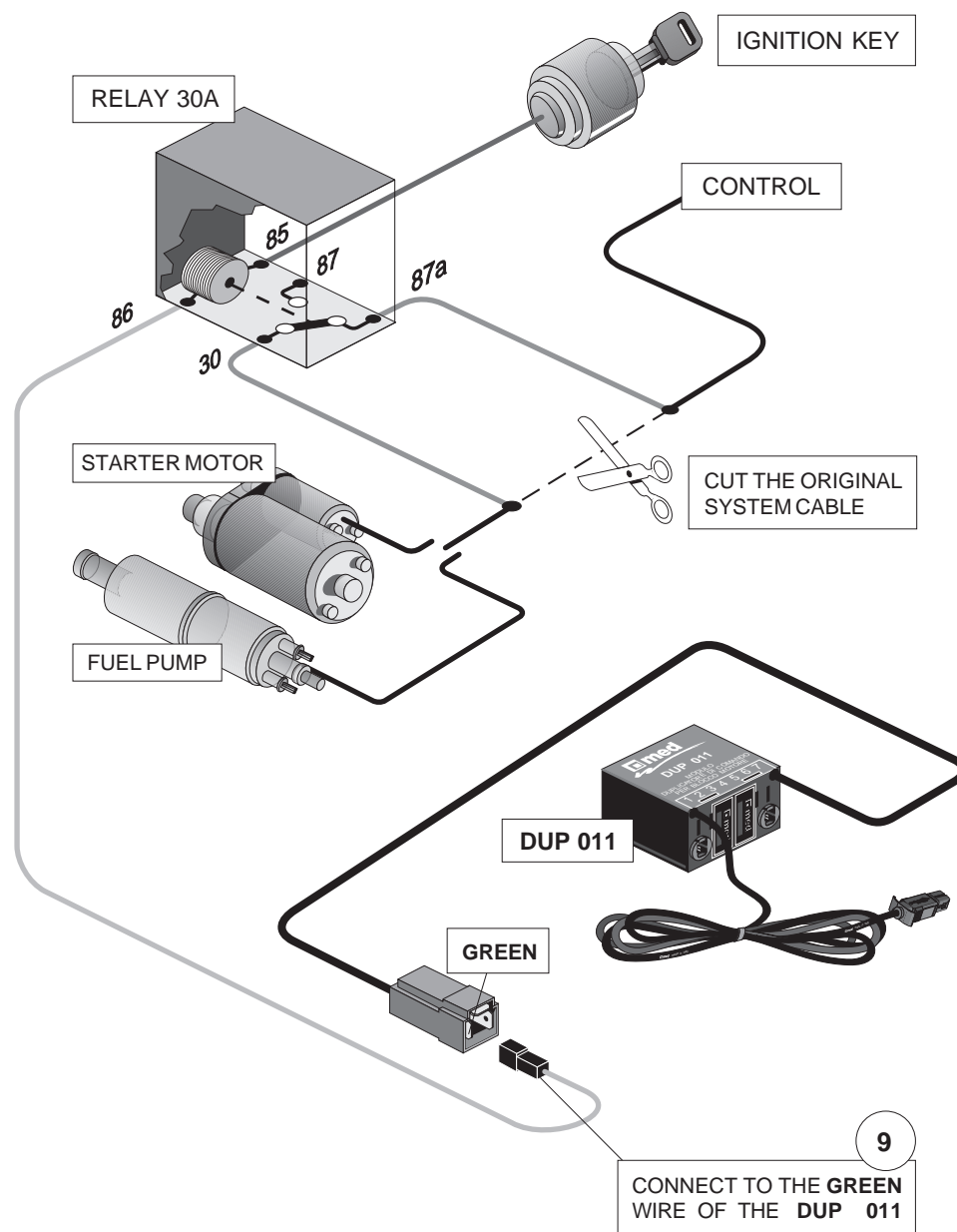
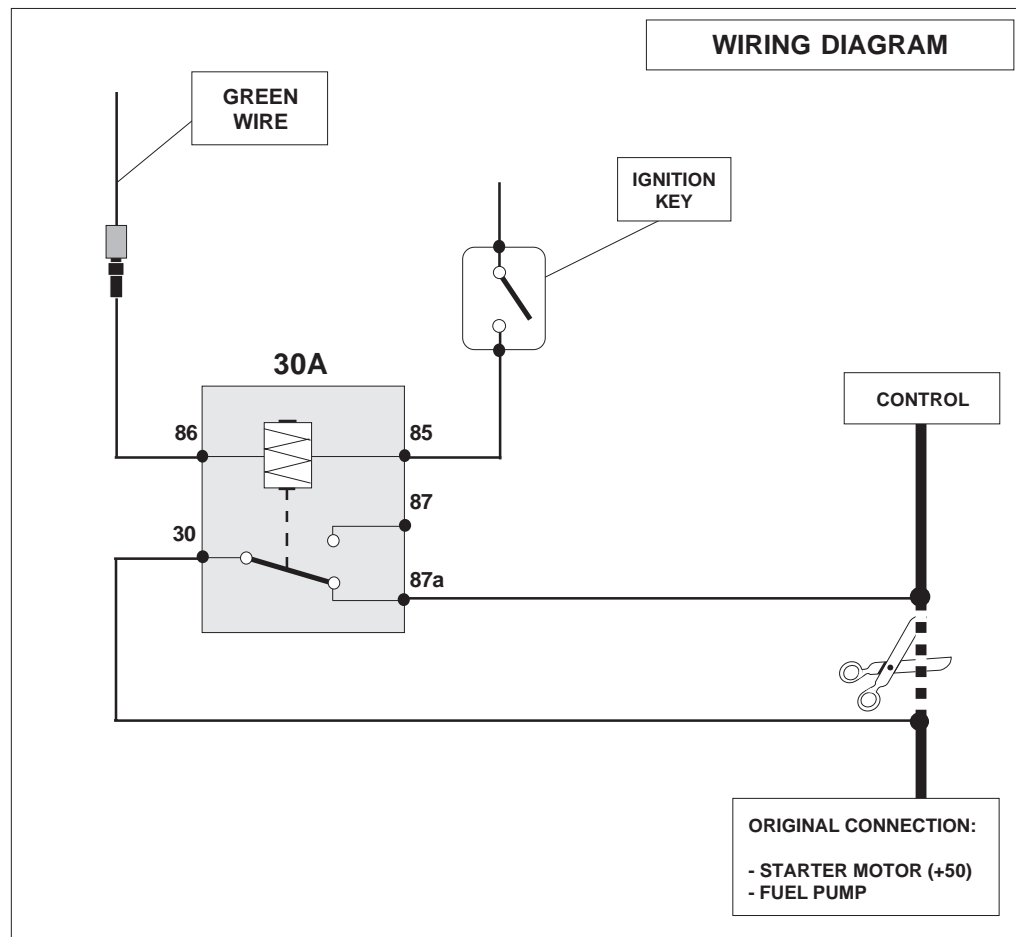
CONNECTION TO THE OPTIONAL RELAY - FITTING INSTRUCTIONS

When the immobiliser is installed on the starting system, interrupt the starter motor control according to the diagram. (**Recommended for cars with catalytic converter**).

When the immobiliser is installed on the fuel supply system, interrupt the electric pump control as shown in the illustration.

- A In both cases, use a **30A** relay.
- B Connect the **positive** ignition block contact (+15) to relay terminal **85**.
- C Connect relay terminal **86** to the **green** wire of the **DUP 011**.
- D Use terminals **30** and **87a** (**normally closed** contact) to interrupt the starter motor control (+50), or the electric pump control, and use a cable with section of at least **2mm²**.

- The relay is activated when the key is turned in the ignition with the immobiliser activated.

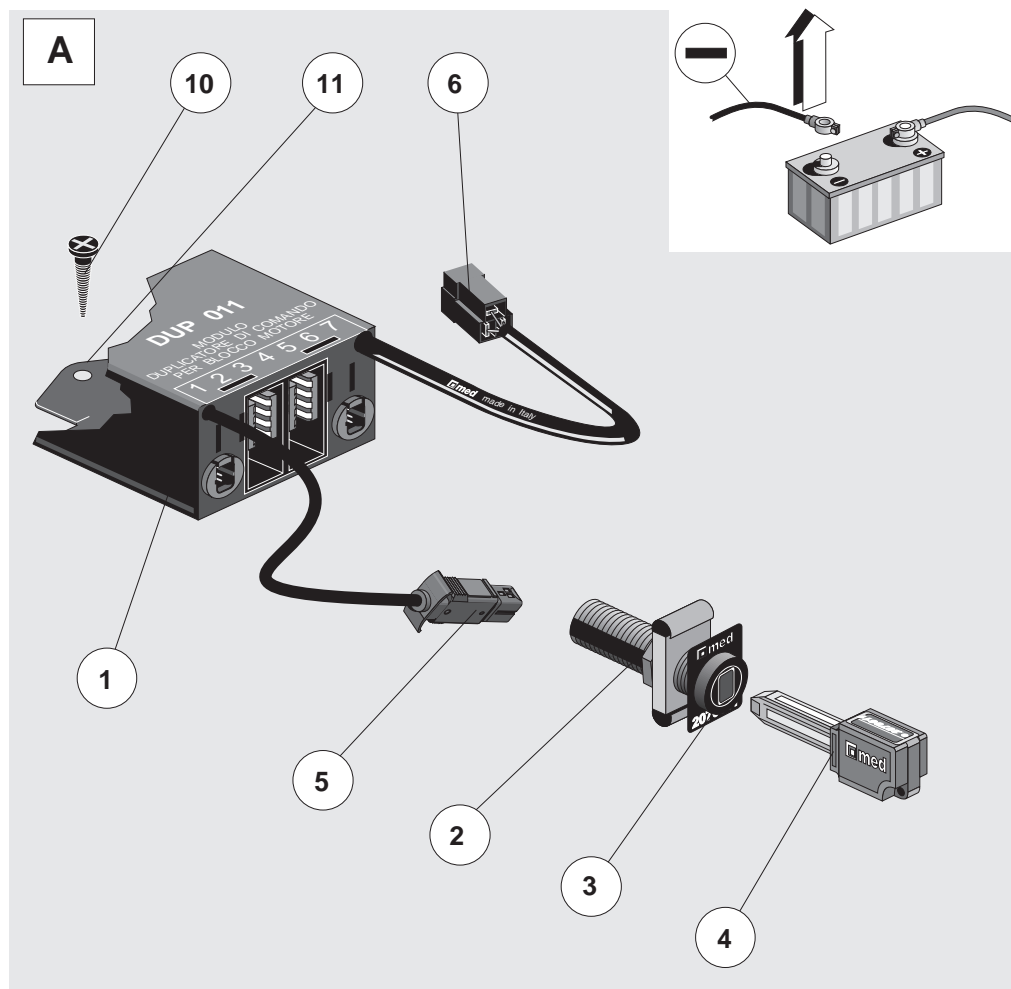


CONTROL DUPLICATOR MODULE

FITTING INSTRUCTIONS

Legend

1	DUP 011 duplicator module	9	Green wire (optional relay)
2	med key socket	10	Self-threading screw
3	Identification plate	11	Hole for module attachment
4	med electronic key	12	Immobiliser A Encoder connector
5	Four-pole connector	13	Immobiliser A key connector
6	Three-prong connector	14	Immobiliser B Encoder connector
7	Black wire (negative)	15	Immobiliser B key connector
8	Brown wire (positive +15)		



- A** To eliminate any possibility of accidental short circuit during installation, **disconnect the negative pole of battery before proceeding.**
- B** Install the immobiliser devices according to the instructions in the respective booklets.
- C** Position the **DUP 011** in the car interior in such a way as to facilitate insertion of the four-pole connectors of the immobiliser devices.
- D** Connect the immobiliser connectors and relative Encoders to the duplicator module, as shown in fig. **B**.
- E** Connect **DUP 011** connector **6** as shown in fig. **C**.

IN DETAIL

- 7 black wire** (earth) - connect to the **negative** pole of battery.
- 8 brown wire** - connect to **positive** contact of ignition key block (**+15**).
- 9 green wire** - connect to optional relay terminal **86**

- F** Make a preliminary test by momentarily plugging **DUP 011** connector **5** into the **med** electronic key socket **2**.
- G** When the test has been made successfully, fit key socket **2** onto the instrument panel in a position that is accessible for inserting connector **5**, leaving the identification plate visible.
- H** Secure the duplicator module using hole **11** with self-threading screw **10**.
- I** Run and secure the anti-theft cables along the most suitable paths for reaching the **DUP 011**, avoiding any parts that may be hot, moving or sharp, and any other passageways that may damage the cables or connectors .

INSTRUCTIONS FOR USE

To start the engine, the electronic control duplicator key must be inserted into its socket. When the engine has started, the electronic key can be removed, even permanently, without causing the engine to stop.

(We do not recommend that you use this method habitually).

The control duplicator is operational after **3/4 seconds** from engine switch-off (*).

During this interval, the engine can be re-started without inserting the electronic key.

(*) see notes on **STATUS MEMORY** on the last page.

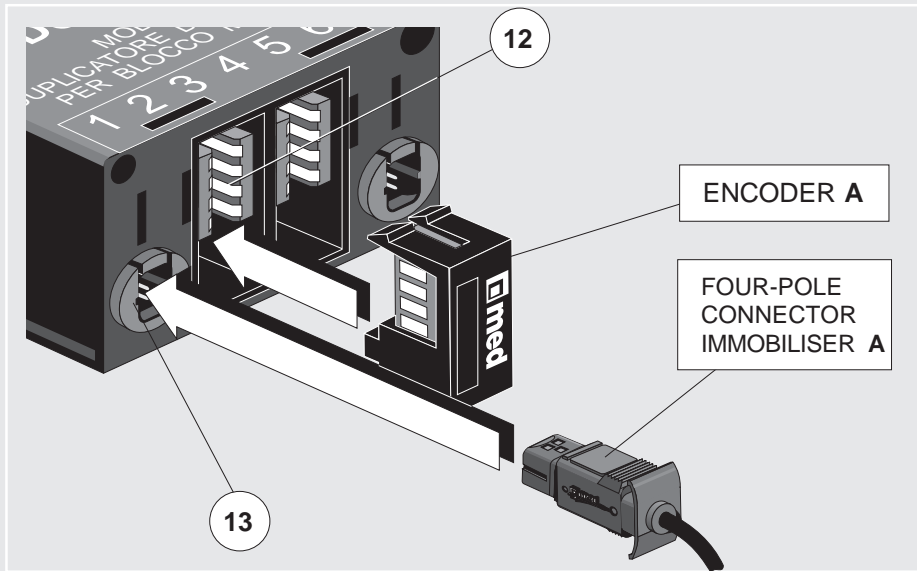
TESTING PROCEDURE

- Make sure that the engine does not start up without the **med** electronic key.
- Make sure that the engine starts when the **med** electronic key is inserted.
- Make sure that, once started, the engine does not stop when the electronic key is removed.
- Make sure that the engine starts again after **3/4 seconds**, even without the electronic key.

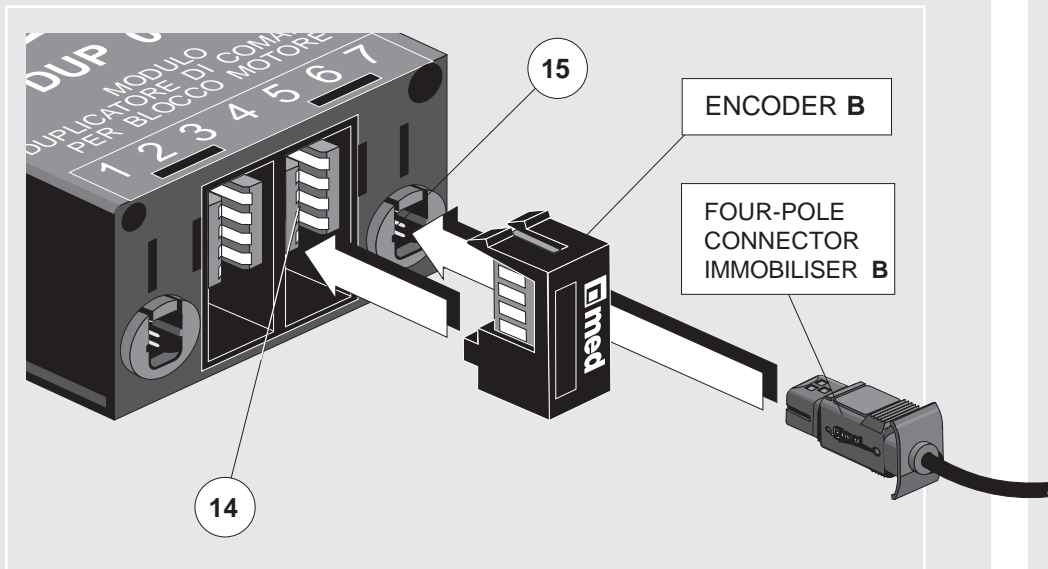
- The **DUP 011** is equipped with three electronic keys with personalised codes for exclusive use with this device. The electronic keys supplied in the anti-theft kits **can no longer be used**. For combining **DUP 011** with **med** systems, position the Encoder supplied in its seat.

B

Connections of the immobiliser A to DUP 011



Connections of the immobiliser B to DUP 011

**C**