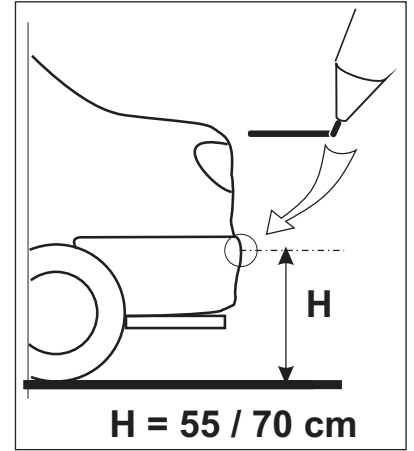




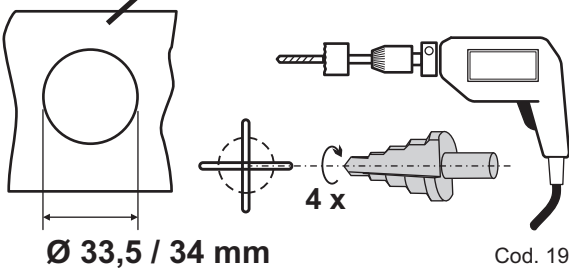
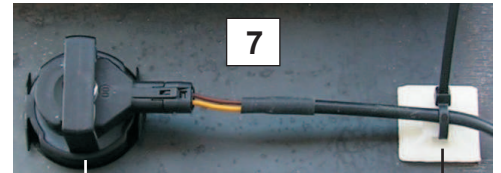
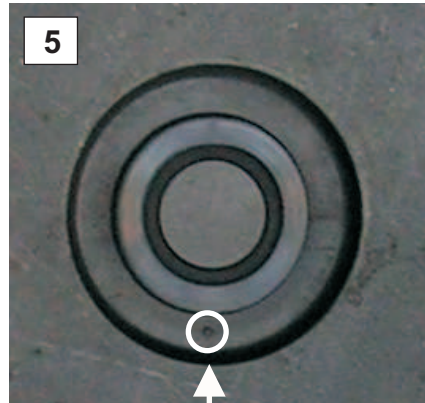
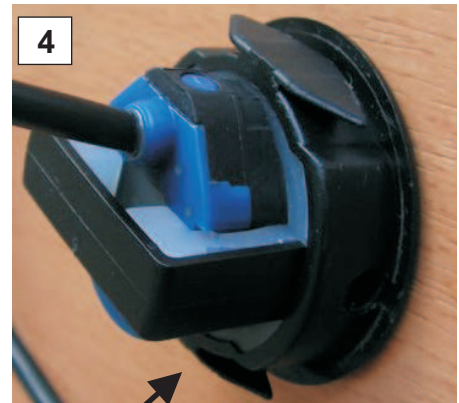
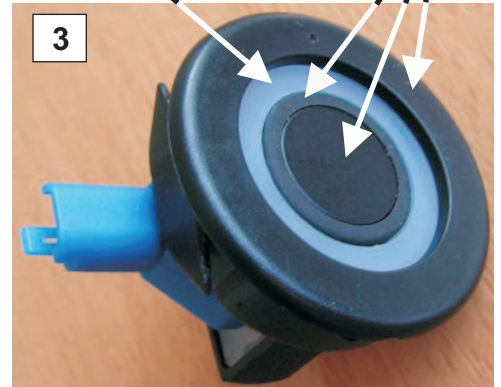
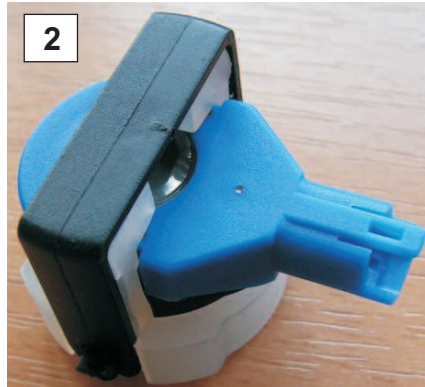
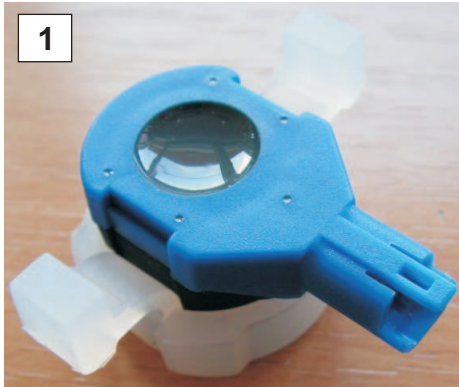
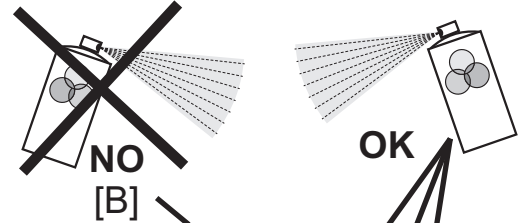
A = CORNICE
B = GUARNIZIONE
IN SILICONE
C = STAFFA

A = FRAME
B = SILICON SEAL
C = BRACKET

A = CHASSIS
B = GARNITURE
EN SILICON
C = ETRIER



SENSORI NON FORNITI IN CONFEZIONE
SENSORS ARE NOT PART OF THE KIT
LES CAPTEURS NE FONT PAS PARTIE DU KIT



← **+18°C**

← **± 80 mm**

PER - FOR - POUR
TOP PARKING PLUS
4F - 4R - 4RD - 8RF

Cod. 190.666.440 - Rev. 01 del 03/12/2010 printed in italy