

## TECHNICAL FEATURES

Nominal voltage:	<b>12 V</b> (nominal value)
Absorption: Stand by:	<b>None</b> (with ignition off)
	<b>120 mA</b> (with engine running)
Temperature range:	<b>from - 30°C to + 100°C</b>
Status Memory:	(see note below)
Encoder:	For connection to alarm systems
Cable length:	<b>3,5 m</b>
Colour of frontal:	<b>Grey</b>

### STATUS MEMORY

Differently from traditional models, the **med 57.1** immobiliser has an added feature which we call "**STATUS MEMORY**". This function "**remembers**" and preserves the condition (status) of the engine being on.

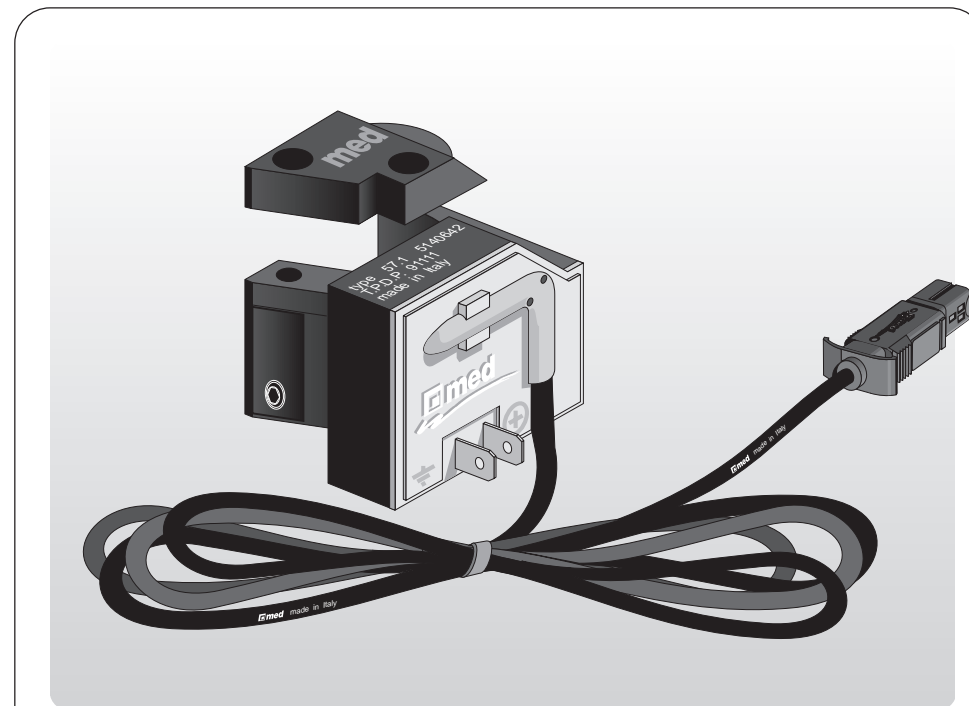
Consequently the electronic key can be removed without causing the engine to stop. If the engine is switched off afterward using the ignition key, the "**STATUS MEMORY**" makes it possible to restart the engine within **3/4 seconds**, even without the electronic key.

**IMPORTANT NOTE:** This **med** immobiliser device is equipped with **three electronic keys** plus **Encoder**, which makes it possible to connect it to an alarm system activated by remote control. For security reasons, we do not supply further keys. Worn out keys may, however, be returned for replacement.

### GUARANTEE

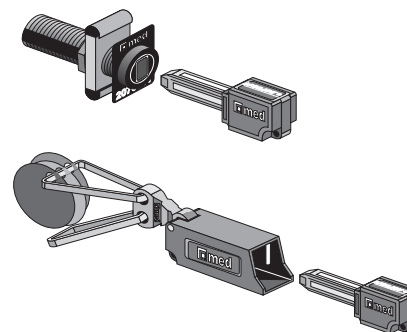
The technical guarantee is valid for one year from the date of installation for parts recognised as defective by **med**. Unauthorised manual labour and any other expenses are excluded from this coverage.

**The guarantee is valid only for those products for which the installation form has been completed and sent to med, or their agent.**



immobiliser

# med 57.1



#### Items included in the packaging

- med 57.1 immobiliser with cable
- Fitting instructions
- Packet "key-holder"
- Fitting accessories
- Packet with two keys
- Packet with spare key and Encoder

fitting instructions



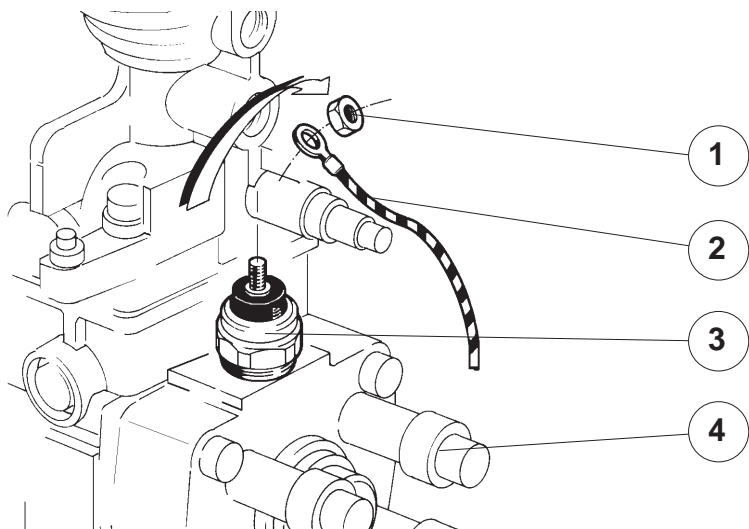
**med** spa  
P.O. Box 255  
42100 Reggio Emilia (Italy)



Cod. 571.316.231

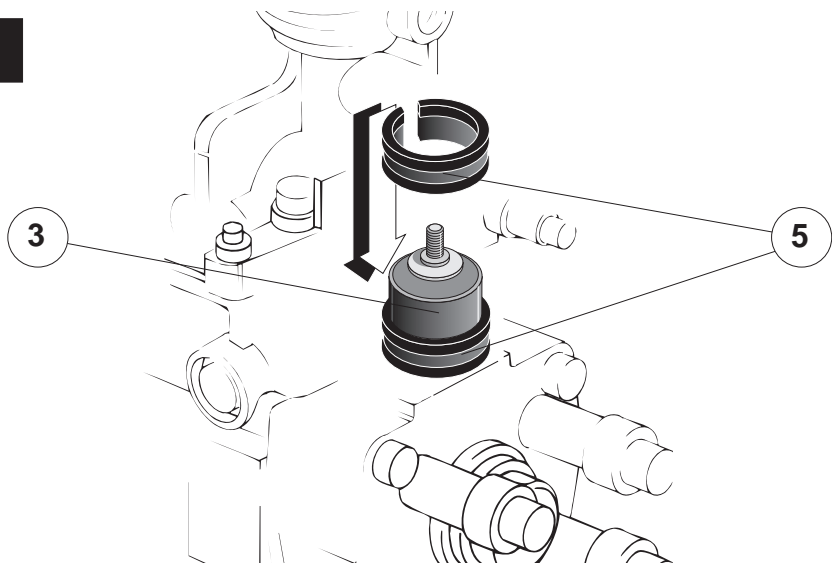
## ELECTRONIC IMMOBILISER FOR *DIESEL* CARS EQUIPPED WITH THE *BOSCH-VE* ROTATIVE PUMP

**A**



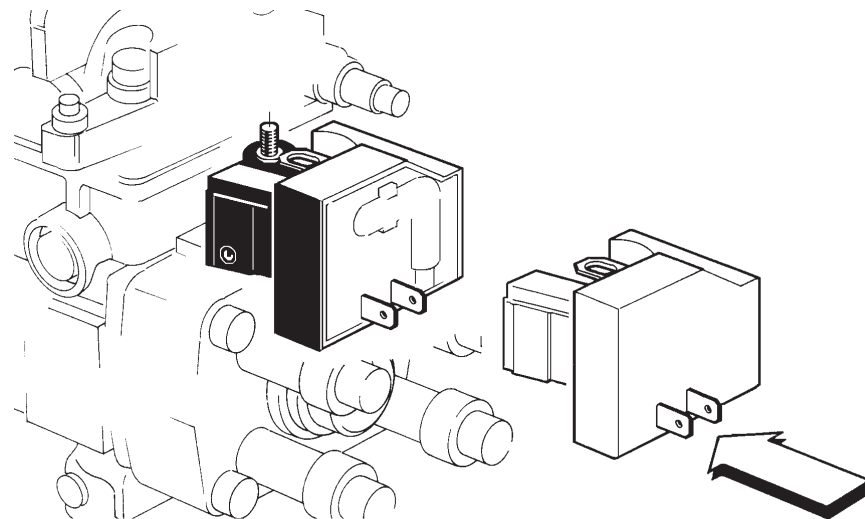
Unscrew the nut 1 and disconnect the supply cable 2 from the shut off solenoid 3 of the injection pump.

**B**



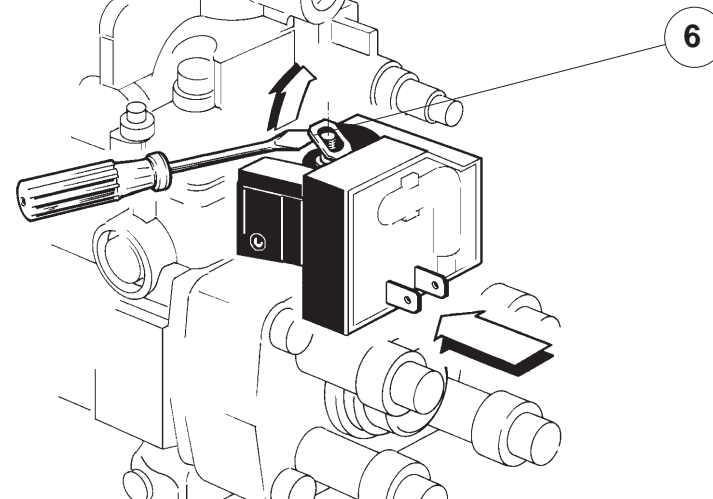
Insert on the shut off solenoid 3 the ring 5 up to the ledge, mounting it with the opening towards the pump body, as showed in the figure.

**C**

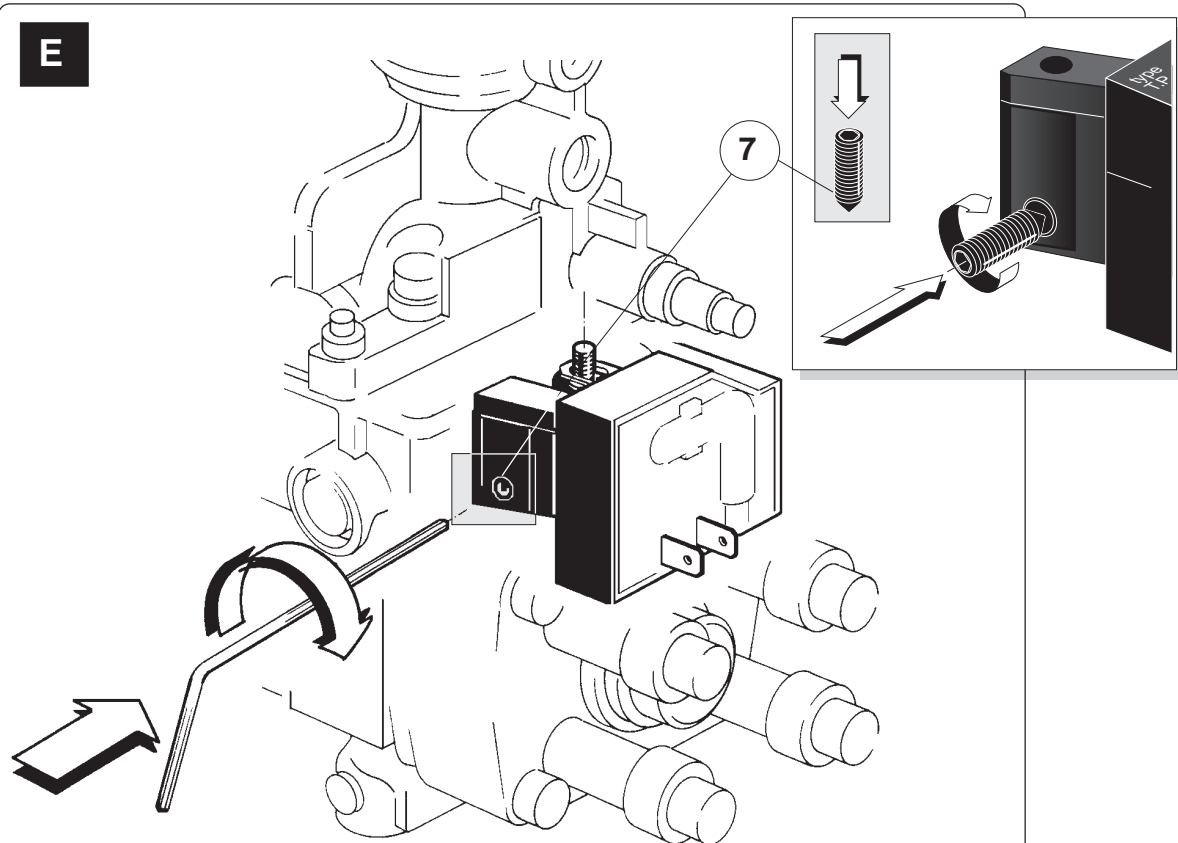


Place the immobiliser near the solenoid 3, as shown in the figure.

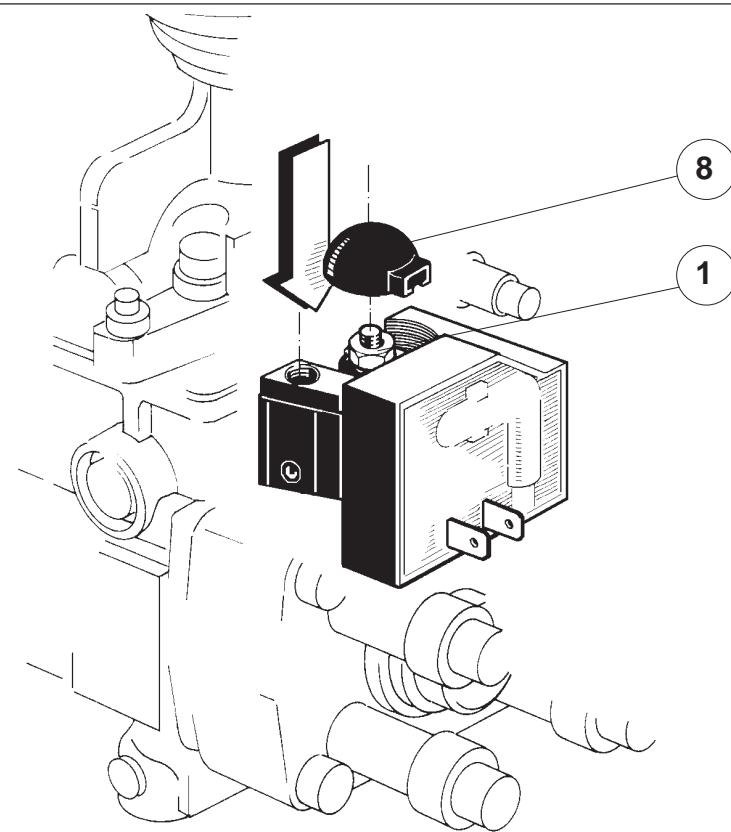
**D**



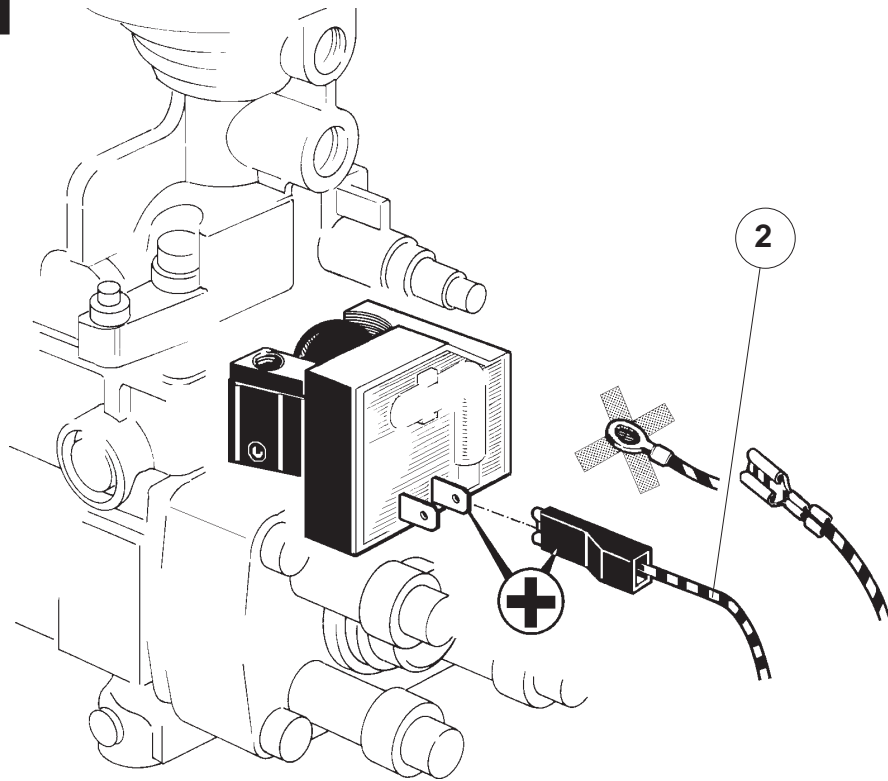
Insert the eyelets 6 on the threaded pin of the solenoid 3 using a screw driver.

**E**

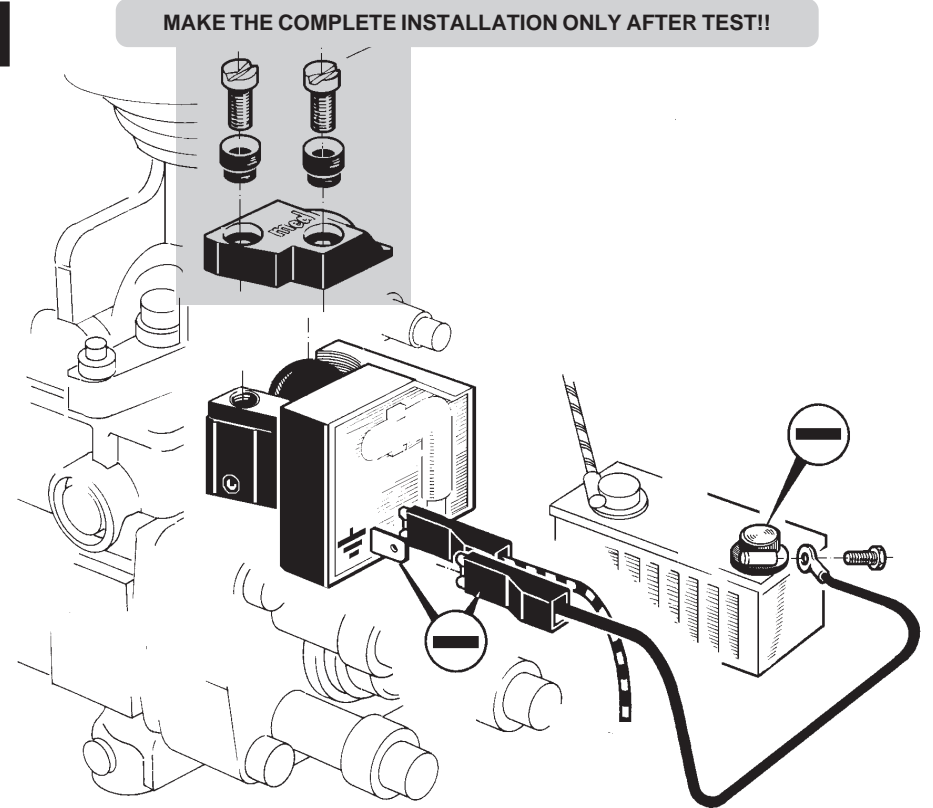
Tighten the allen screw **7** that has to work on the ring **5**, keeping the immobiliser pressed to the pump body.

**F**

Only after fitting the allen screw **7**, fix the eyelets **6** to the threaded pin, using the nut **1**, and place the insulating cap **8** on the double tab **6**.

**G**

Insert the supply cable **2** of the shut off solenoid **3** on the positive (+) eyelet, replacing, if necessary, the original terminal with a female **FASTON**.

**H**

Connect the supplied **black** cable to the immobiliser earth eyelet and to the **negative pole of battery** using the eyelets supplied. **Test** immobiliser before mounting the cap.

- I Run and attach the immobiliser cable along the best path for reaching the key socket or **med** system central unit, avoiding hot areas and passageways that could damage the cable or connector.
- L Fit the **med** key socket **12** onto the dashboard, leaving the identification plate **13** visible and connect the immobiliser cable connector **11** to the back.
- M Re-connect the battery and test the immobiliser.
- N After test, mount and fix the cap **9** using the security screws **10** and seal the hole of the Allen screw **7**, using the lead ball **14**, punching it after introduction.

#### TESTING PROCEDURE

- Make sure that the engine does not start without the **med** electronic key.
- Make sure that the engine starts when the **med** electronic key is inserted.
- Make sure that, once started, the engine does not stop when the **med** electronic key is removed.
- Make sure that the engine starts again after **3/4 seconds**, even without the **med** electronic key.

#### INSTRUCTIONS FOR USE

To start the engine, the electronic immobiliser key must be inserted into its socket. When the engine has started, the electronic key can be removed, even permanently, without causing the engine to stop. (We do not recommend that you use this method habitually).

The immobiliser unit memory is operational for **3/4 seconds** after the engine is switched off. (See notes on "**STATUS MEMORY**" on the last page).

During this interval, the engine can be re-started without inserting the **med** electronic key.

Legend	
1 Solenoid nut	8 Insulating cap
2 Solenoid supply cable	9 <b>med</b> cap
3 Shut off solenoid	10 Security screws
4 Injection pump	11 Immobiliser connector
5 Tightening ring	12 <b>med</b> key socket
6 Double tab	13 Identification plate
7 Allen screw	14 Lead ball

