

## TECHNICAL FEATURES med 67.1 (med 67.2)

Nominal voltage:	<b>12 V (24 V)</b> (nominal value)
Absorption: Stand by:	<b>None</b> (with ignition off)
	<b>120 mA (80 mA)</b> (with engine running)
Temperature range:	<b>from - 30°C to + 100°C</b>
Cable length:	<b>3,5 m</b>
Colour of frontal:	<b>black (dark red)</b>

**IMPORTANT NOTE:** This **med** immobiliser device is equipped with three electronic keys. For security reasons, we do not supply further keys. Worn out keys may, however, be returned for replacement.

### GUARANTEE

The technical guarantee is valid for one year from the date of installation for parts recognised as defective by **med**. Unauthorised manual labour and any other expenses are excluded from this coverage.

**The guarantee is valid only for those products for which the installation form has been completed and sent to med, or their agent.**

### ANIA APPROVAL

The **med 67.1** and **med 67.2** models have been added to the list of immobilisers approved by A.N.I.A (National Italian Insurance Association), necessary for insurance coverage of road transports in Italy.

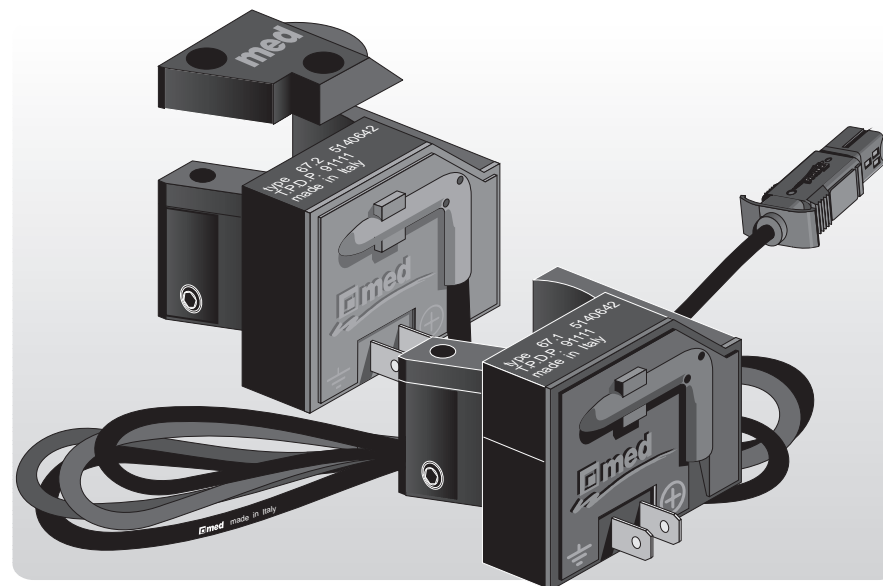


National Italian Insurance Association



**med** spa  
Via Raffaello, 33  
42100 Reggio Emilia (Italy)

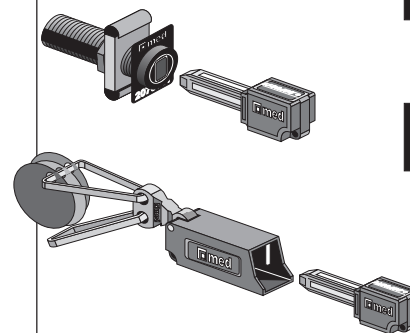
Cod. 671.316.232



immobiliser

**med 67.1** 12 V

**med 67.2** 24 V



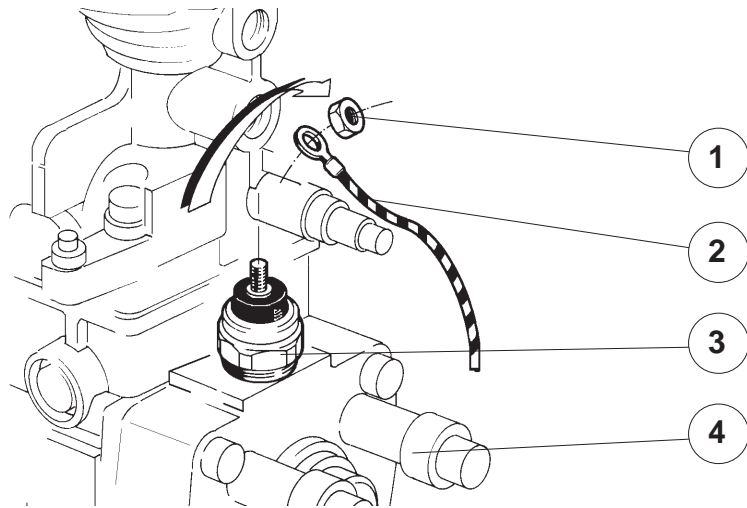
fitting instructions

Items included in the packaging

**med 67.1 (med 67.2)** immobiliser with cable  
Fitting instructions  
Packet "key-holder"  
Fitting accessories  
Packet with two keys  
Packet with spare key and Encoder

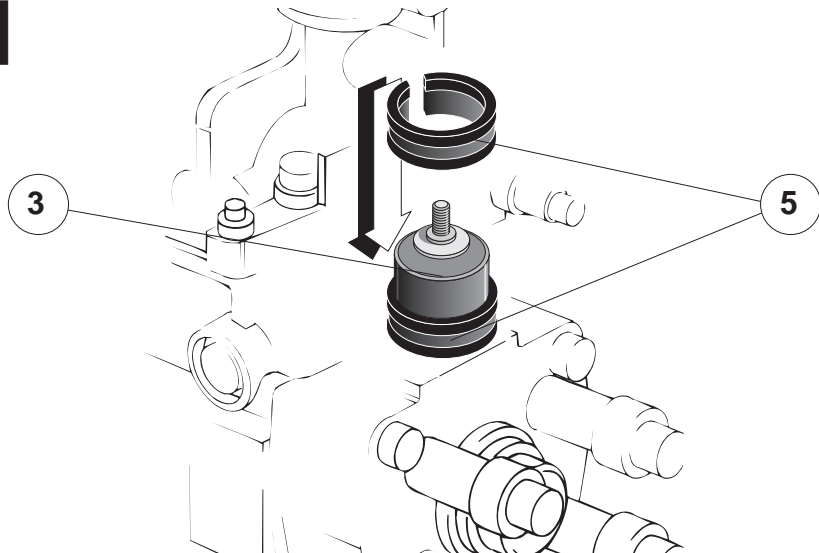
## ELECTRONIC IMMOBILISER FOR *DIESEL* VEHICLES EQUIPPED WITH THE *BOSCH-VE* ROTATIVE PUMP

**A**



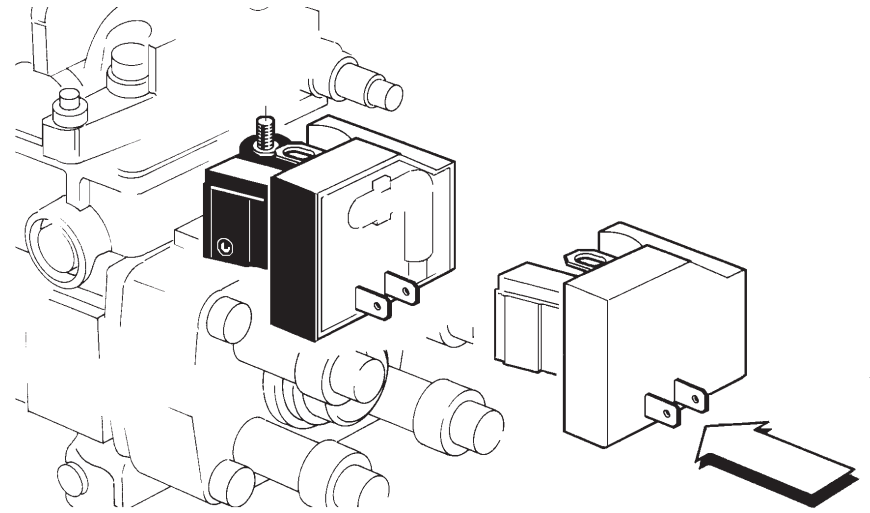
Unscrew the nut **1** and disconnect the supply cable **2** from the shut off solenoid **3** of the injection pump.

**B**



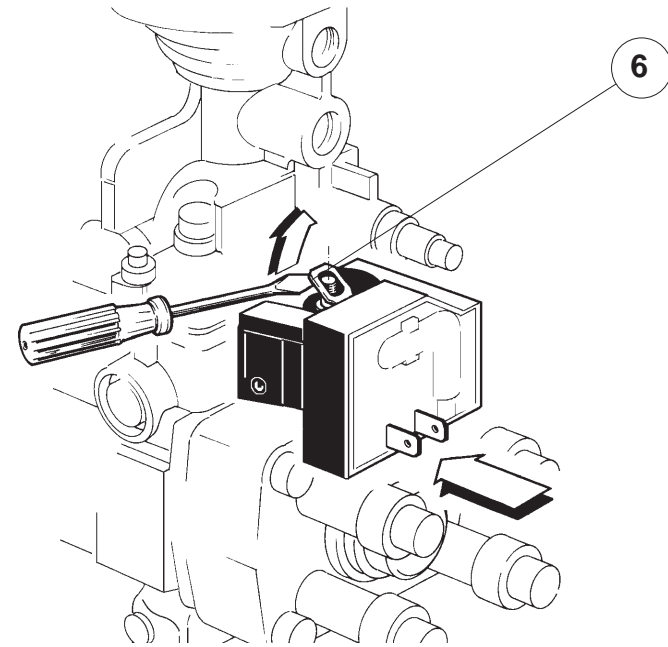
Insert on the shut off solenoid **3** the ring **5** up to the ledge, mounting it with the opening towards the pump body, as shown in the figure.

**C**



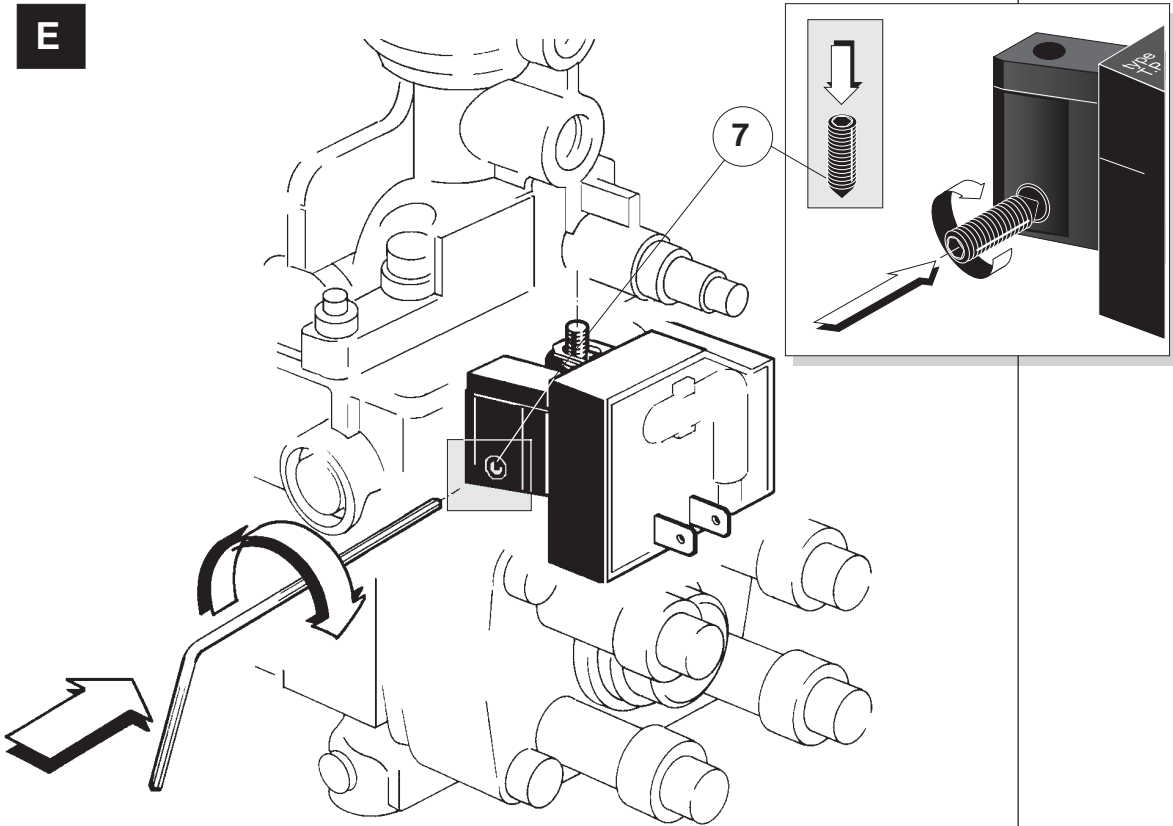
Place the immobiliser near the solenoid **3**, as shown in the figure.

**D**



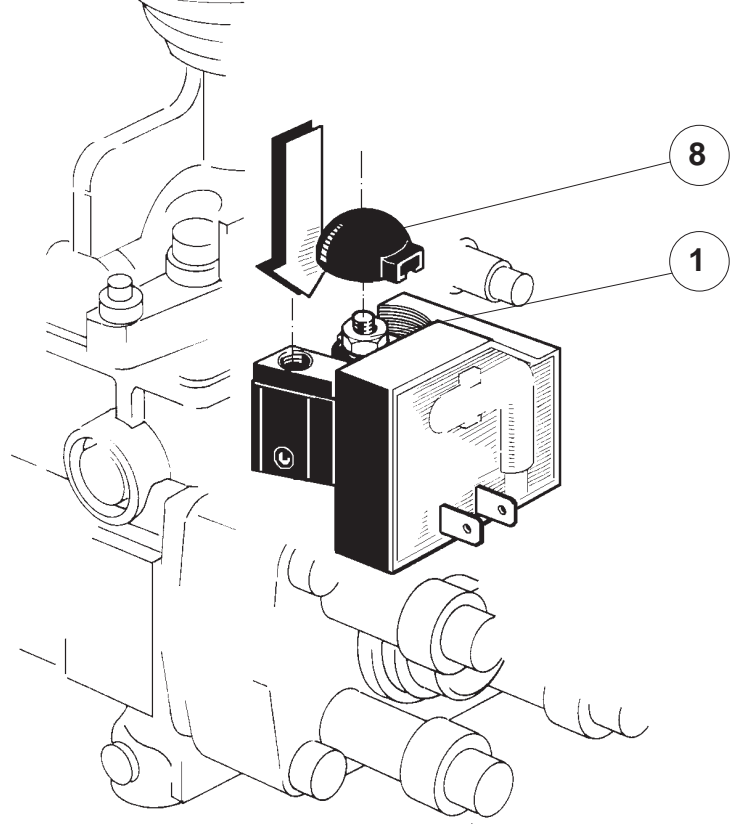
Insert the eyelets **6** on the threaded pin of the solenoid **3** using a screw driver.

**E**

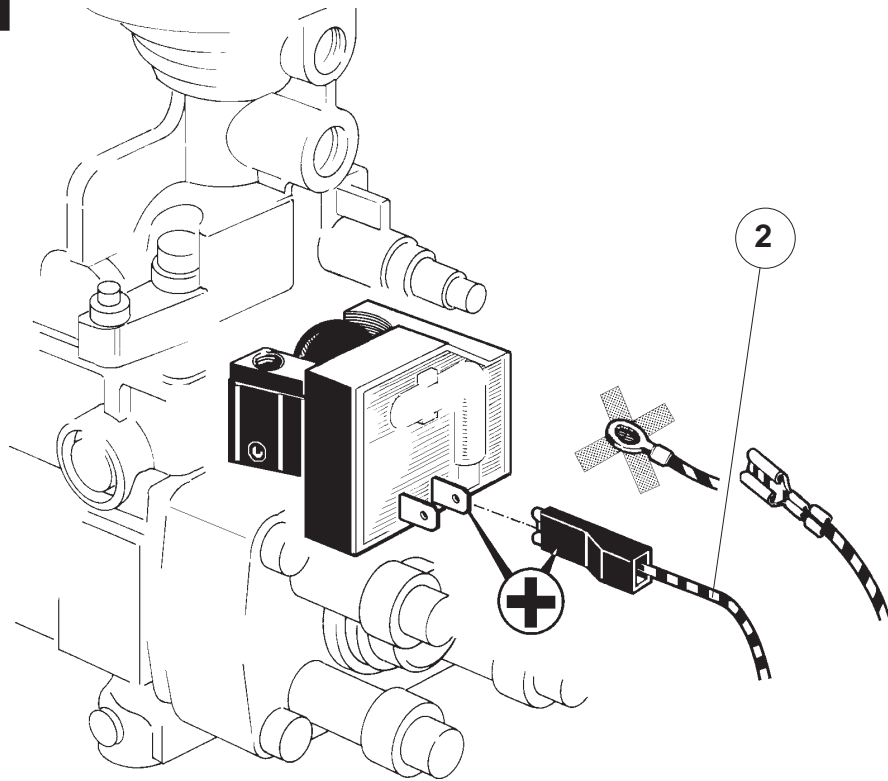


Tighten the Allen screw **7** that has to work on the ring **5**, keeping the immobiliser pressed to the pump body.

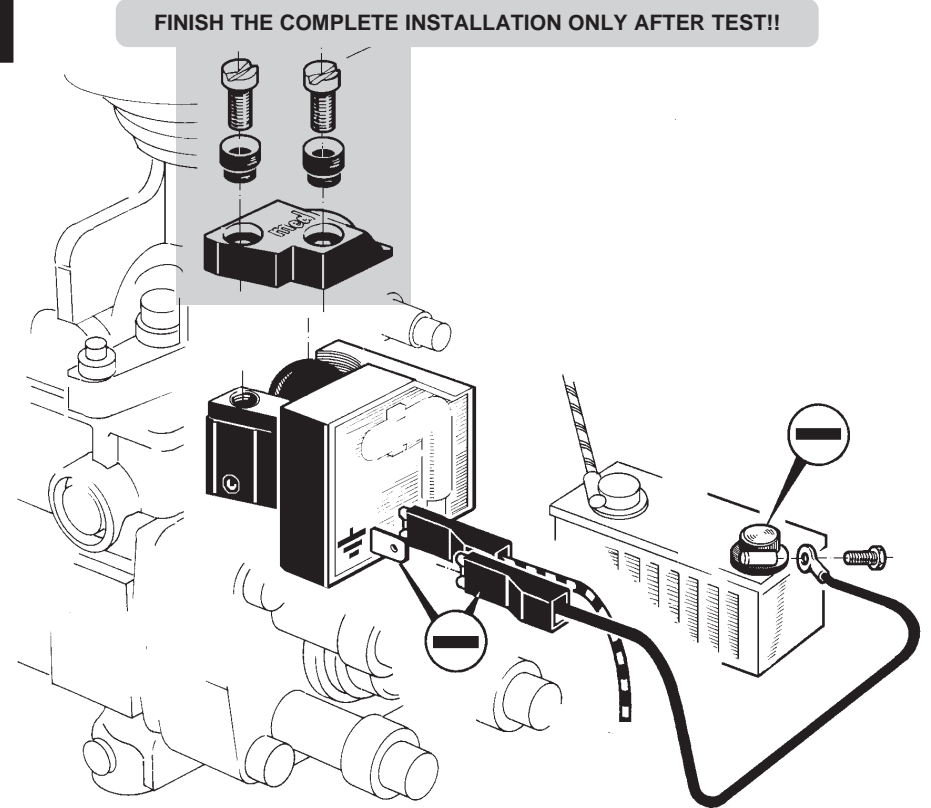
**F**



Only after fitting the Allen screw **7**, fix the eyelets **6** to the threaded pin, using the nut **1**, and place the insulating cap **8** on the double tab **6**.

**G**

Insert the supply cable **2** of the shut off solenoid **3** on the positive (+) eyelet, replacing, if necessary, the original with a female **FASTON**.

**H**

Connect the supplied **black** cable to the immobiliser earth eyelet and to **the negative pole of battery** using the eyelets supplied. **Test** immobiliser before mounting the cap.

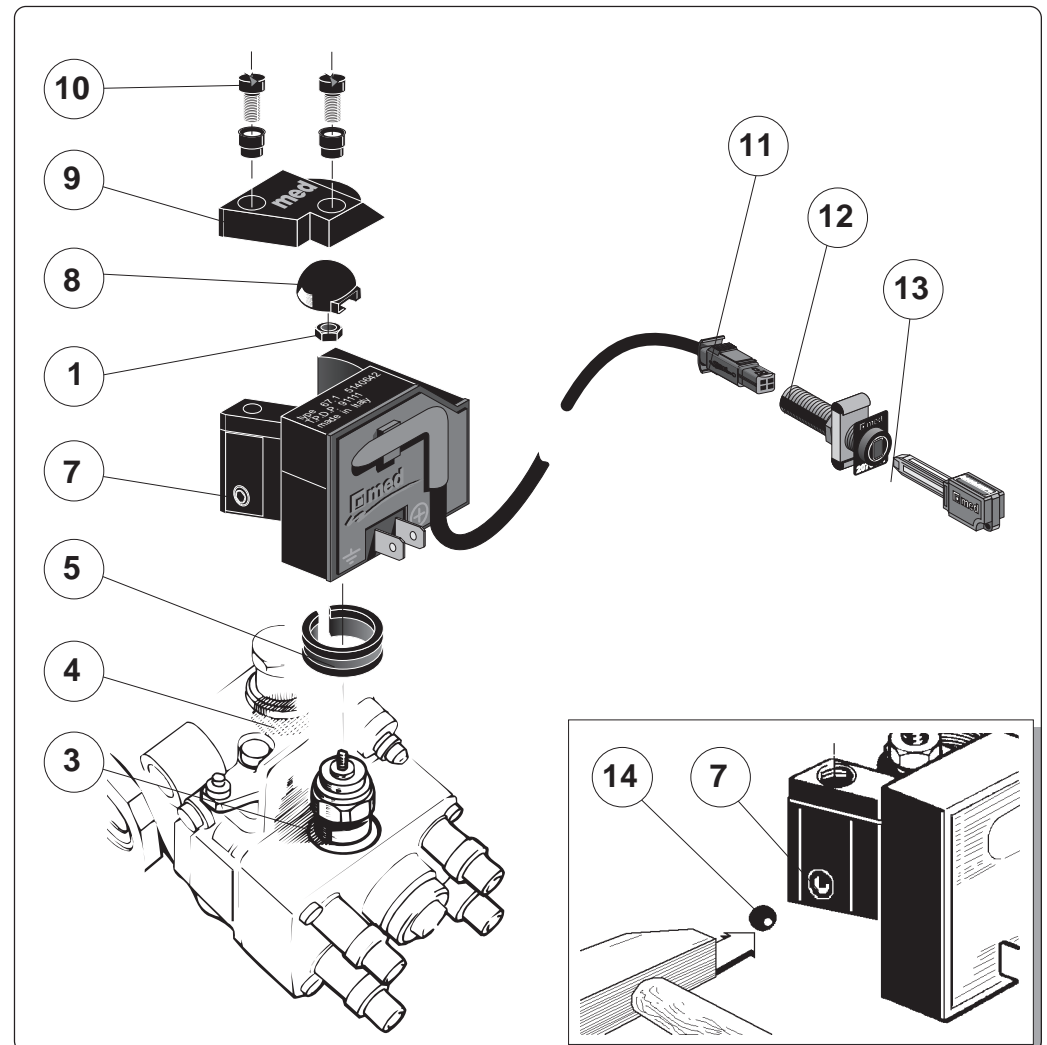
- I Run and attach the immobiliser cable along the best path for reaching the key socket avoiding hot areas and passageways that could damage the cable or connector.
- L Fit the **med** key socket **12** onto the dashboard, leaving the identification plate **13** visible and connect the immobiliser cable connector **11** to the back.
- M Re-connect the battery and test the immobiliser.
- N After test, mount and fix the cap **9** using the security screws **10** and seal the hole of the allen screw **7**, using the lead ball **14**, punching it after introduction.

#### TESTING PROCEDURE

- Make sure that the engine does not start without the **med** electronic key.
- Make sure that the engine starts when the **med** electronic key is inserted.
- Make sure that the engine cuts off (after a few seconds delay) when the **med** electronic key is removed.

#### INSTRUCTIONS FOR USE

- To start the engine, the electronic immobiliser key must be inserted into its socket. The electronic key must remain inserted as long as the engine is on.
- After switching off the engine remove the electronic key to activate the immobiliser.



#### Legend

- |                         |                          |
|-------------------------|--------------------------|
| 1 Solenoid nut          | 8 Insulating cap         |
| 2 Solenoid supply cable | 9 <b>med</b> cap         |
| 3 Shut off solenoid     | 10 Security screws       |
| 4 Injection pump        | 11 Immobiliser connector |
| 5 Tightening ring       | 12 <b>med</b> key socket |
| 6 Eyelets               | 13 Identification plate  |
| 7 Allen screw           | 14 Lead ball             |