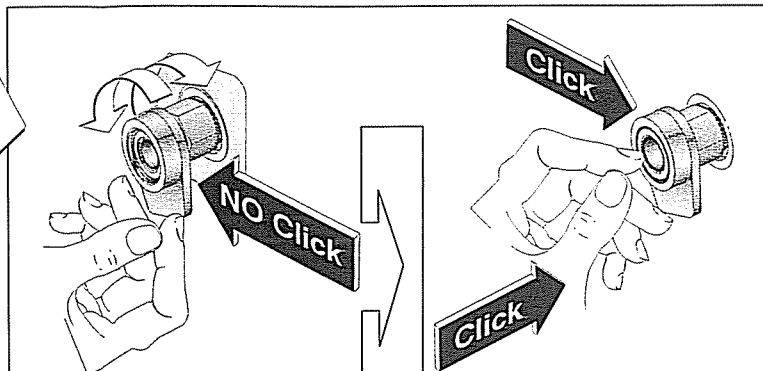
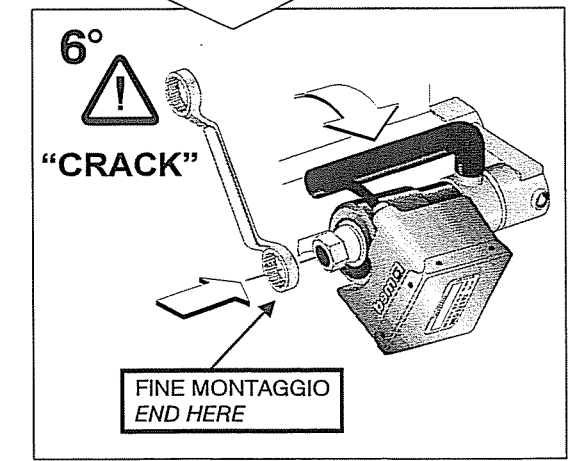
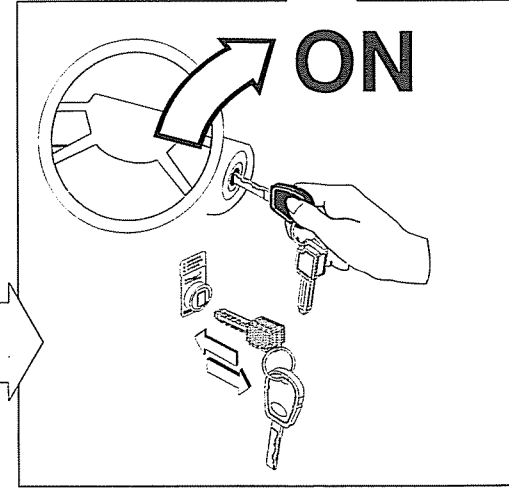
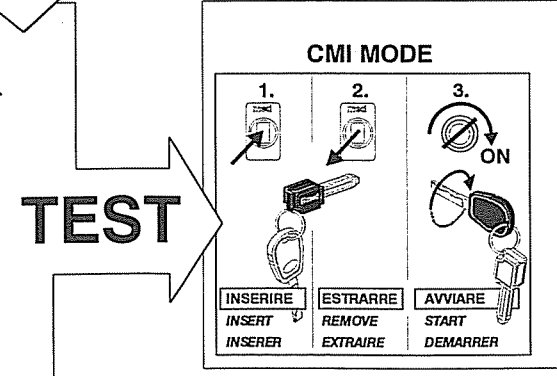
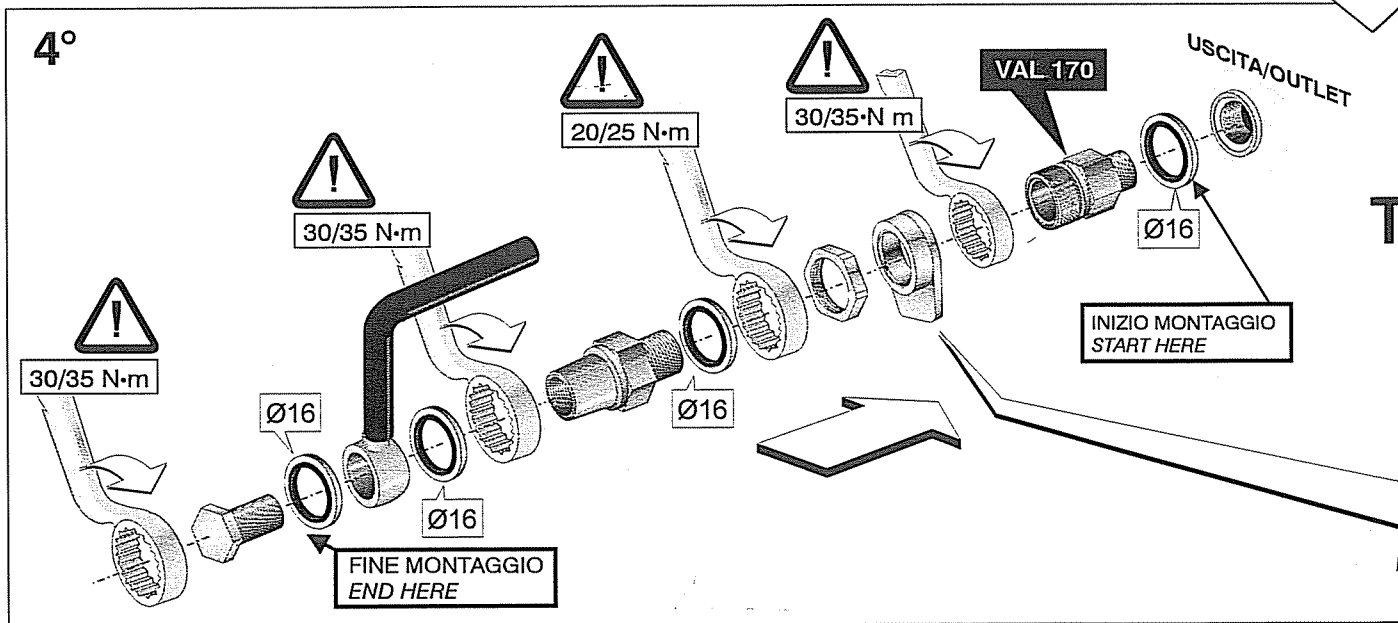
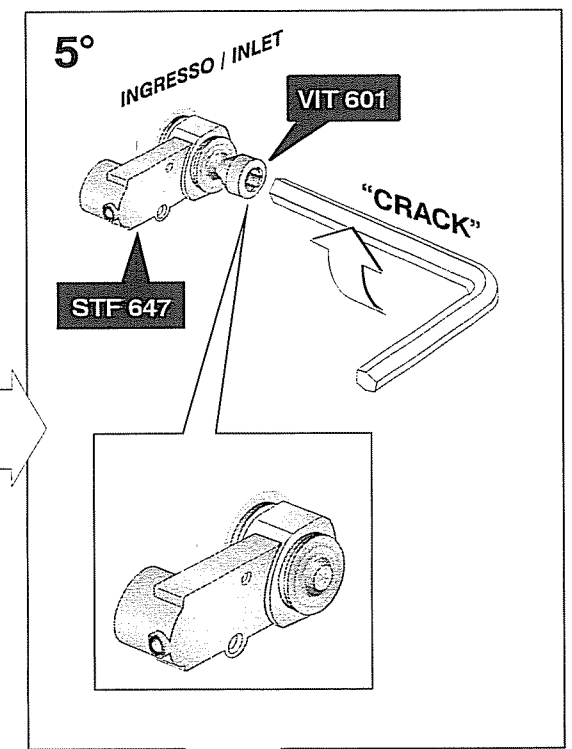
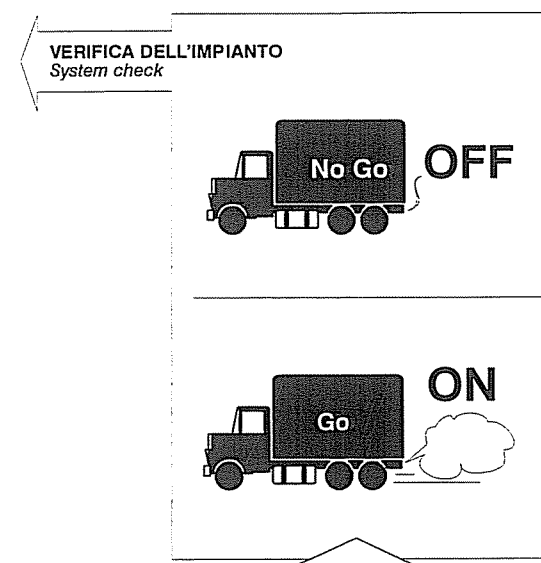
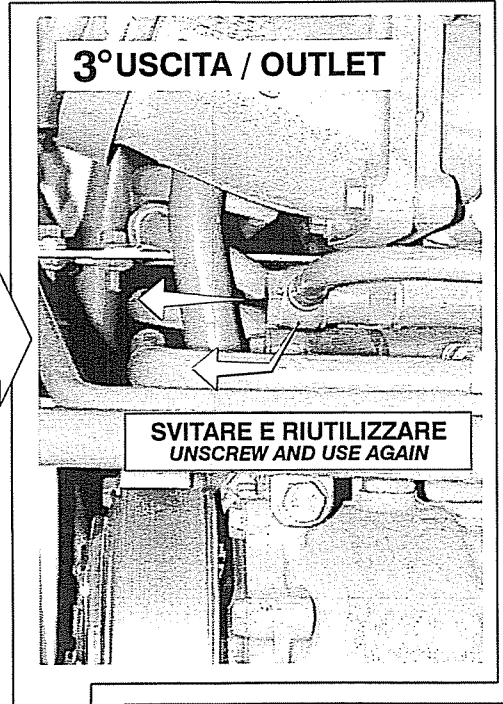
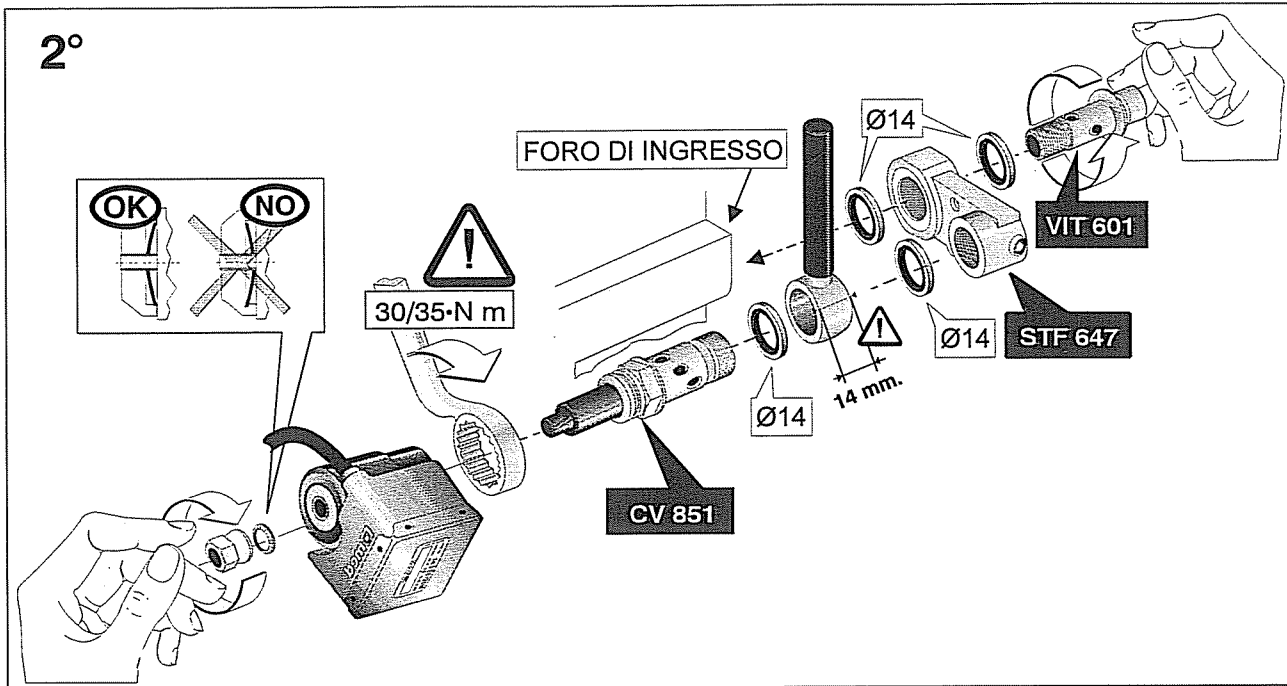
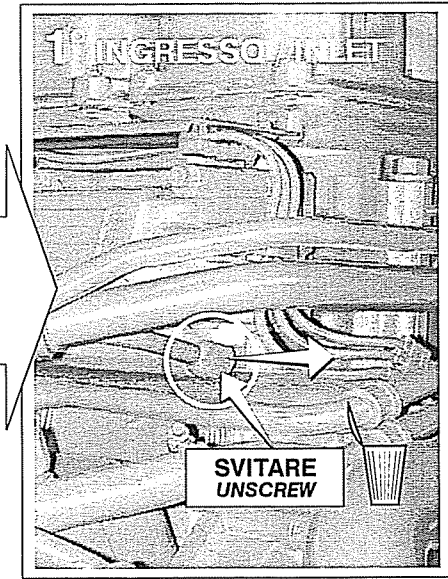
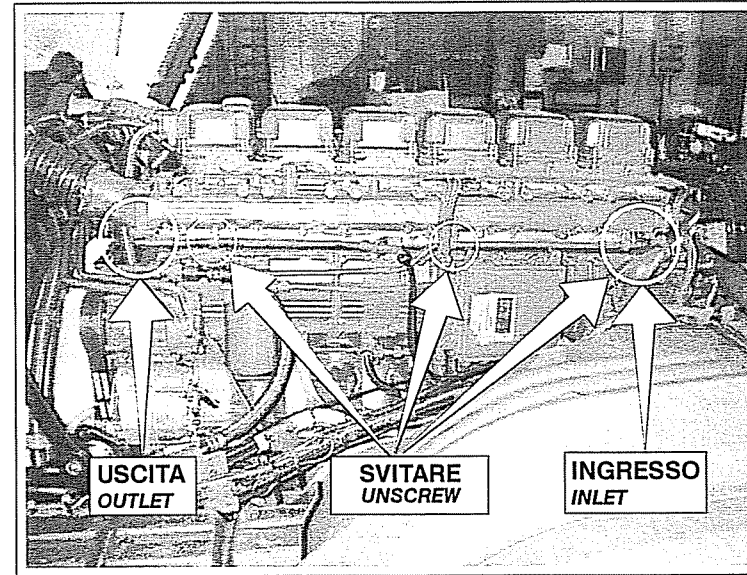
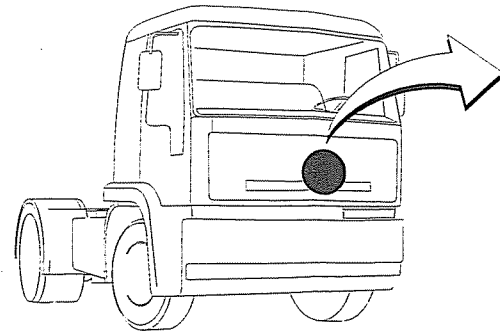


[med]

MED 85.27



085315582



ATTENZIONE:
ASSICURARSI DI AVERE RIATTACCATO E
RIAVVITATO LE FASCETTE DI FISSAGGIO
DEI TUBI DI INGRESSO E USCITA GASOLIO

ATTENTION:
MAKE SURE THAT DIESEL OIL INLET AND OUTLET
PIPE CLAMPS HAVE BEEN RECONNECTED
AND RETIGHTENED